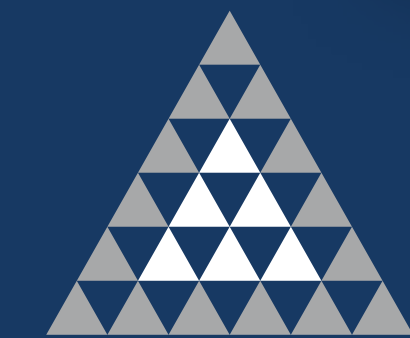


# South African Economy's Iconic monument



JOHANNESBURG GAUTENG



ATTERBURY

*It's a matter of association*

DIVERCITY

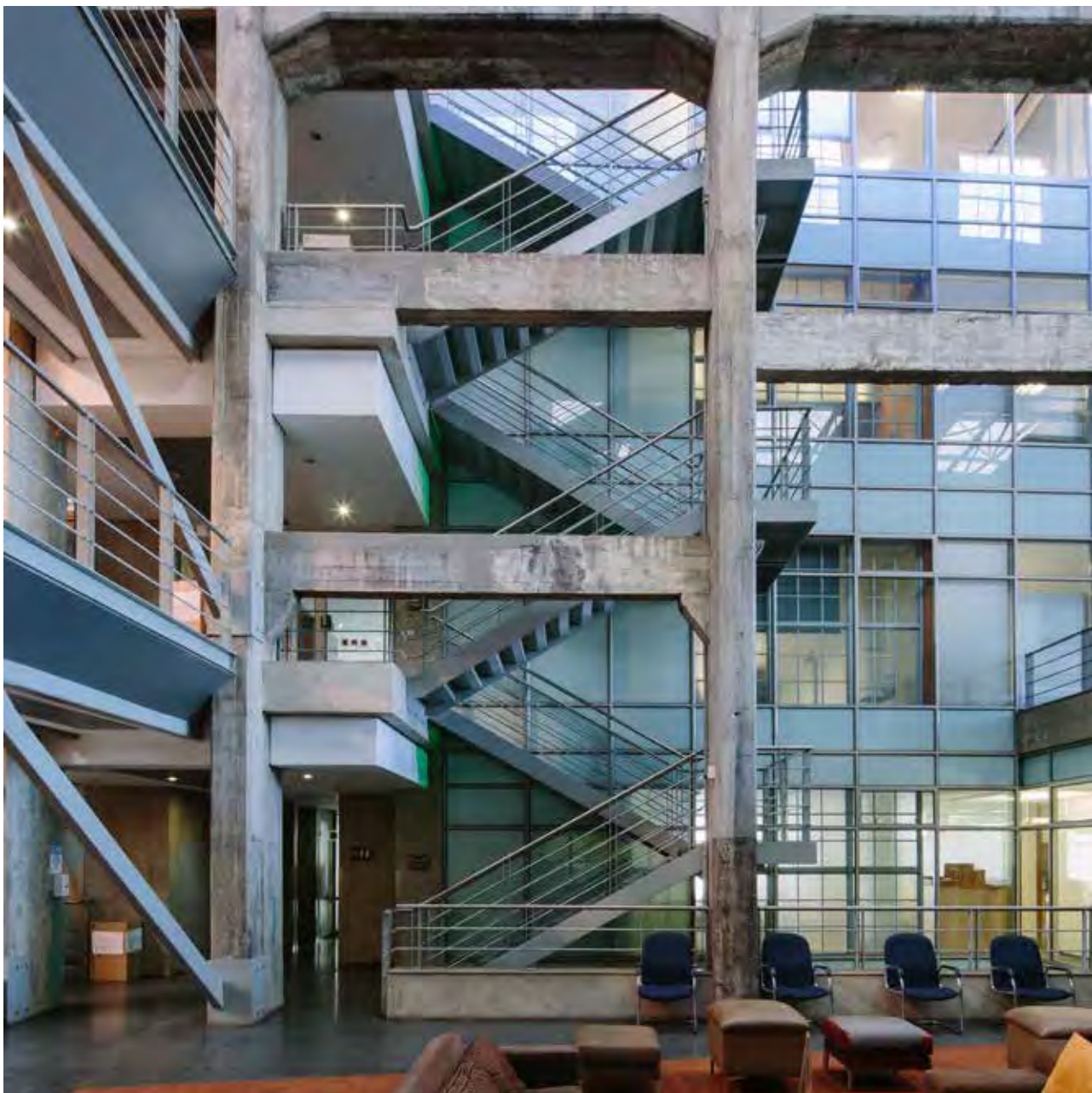
URBAN PROPERTY GROUP

Turbine Hall, 65 Ntemi Piliso Street, Johannesburg

[ATTERBURY.CO.ZA/PORTFOLIO-ITEMS/TURBINE-HALL](https://atterbury.co.za/portfolio-items/turbine-hall)



- ▶ ABOUT ATTERBURY..... 1
- ▶ ABOUT DIVERCITY ..... 2
- ▶ LOCALITY & ACCESS..... 3
- ▶ MICRO LOCALITY ..... 4
- ▶ INTRODUCTION: TURBINE HALL..... 5
- ▶ ARCHITECTURAL FLOOR PLANS
  - ▶ GROUND ..... 6
  - ▶ FIRST ..... 7
  - ▶ SECOND ..... 8
  - ▶ THIRD ..... 9
  - ▶ LOWER GROUND AND BASEMENT ..... 10
- ▶ PHOTOGRAPHIC LIBRARY ..... 11







## MASTER PLAN: DEVELOPING DREAMS



1994 saw the beginning of a new era for South Africa. It was the birth of our country as a new, true democracy and the whole world was waiting in anticipation to see to what levels the Rainbow Nation would rise.

1994 also marked the birth of Atterbury and the founders, Francois van Niekerk and Louis van der Watt, realised that there were no limits to their dreams of becoming an international force to be reckoned with. For over 27 years Atterbury has developed and managed prime commercial, industrial, retail and residential property across South Africa, the rest of the African continent and Europe.

Within the Atterbury Group you are sure to find expertise in development, asset management, leasing and corporate services. At Atterbury, we've always believed that development is the key to unlock economic and societal growth and improvement. Creative, well-managed spaces, featuring appealing aesthetics and elegant architecture within safe and accessible environments are hallmarks of all Atterbury developments.

**Atterbury is renowned as a leading industrial developer evident by winning consecutive SAPOA awards for best industrial development in South Africa from 2015 to 2017 for Westcon, Hilti and Amrod at Waterfall City in Gauteng.**



Divercity is a property fund that is setting a new standard for pro-poor urban development that addresses these challenges.

Founded by some of South Africa’s foremost property professionals and investors, Divercity invests exclusively in inner-city precincts.

These precincts are well-located, affordable housing weighted, amenity-rich neighbourhoods that offer low and middle income households the opportunity to live in wholesome urban environments, close to where they work and with access to all essential amenities.

This model is in stark contrast to the current dominant mode of affordable housing delivery in South Africa and most developing contexts, where lower income households are confined to the urban periphery – far from opportunities and essential services.

JEWEL CITY PRECINCT



TOWERS MAIN



DIVERCITY

URBAN PROPERTY FUND

DIVERCITY RESIDENTIAL

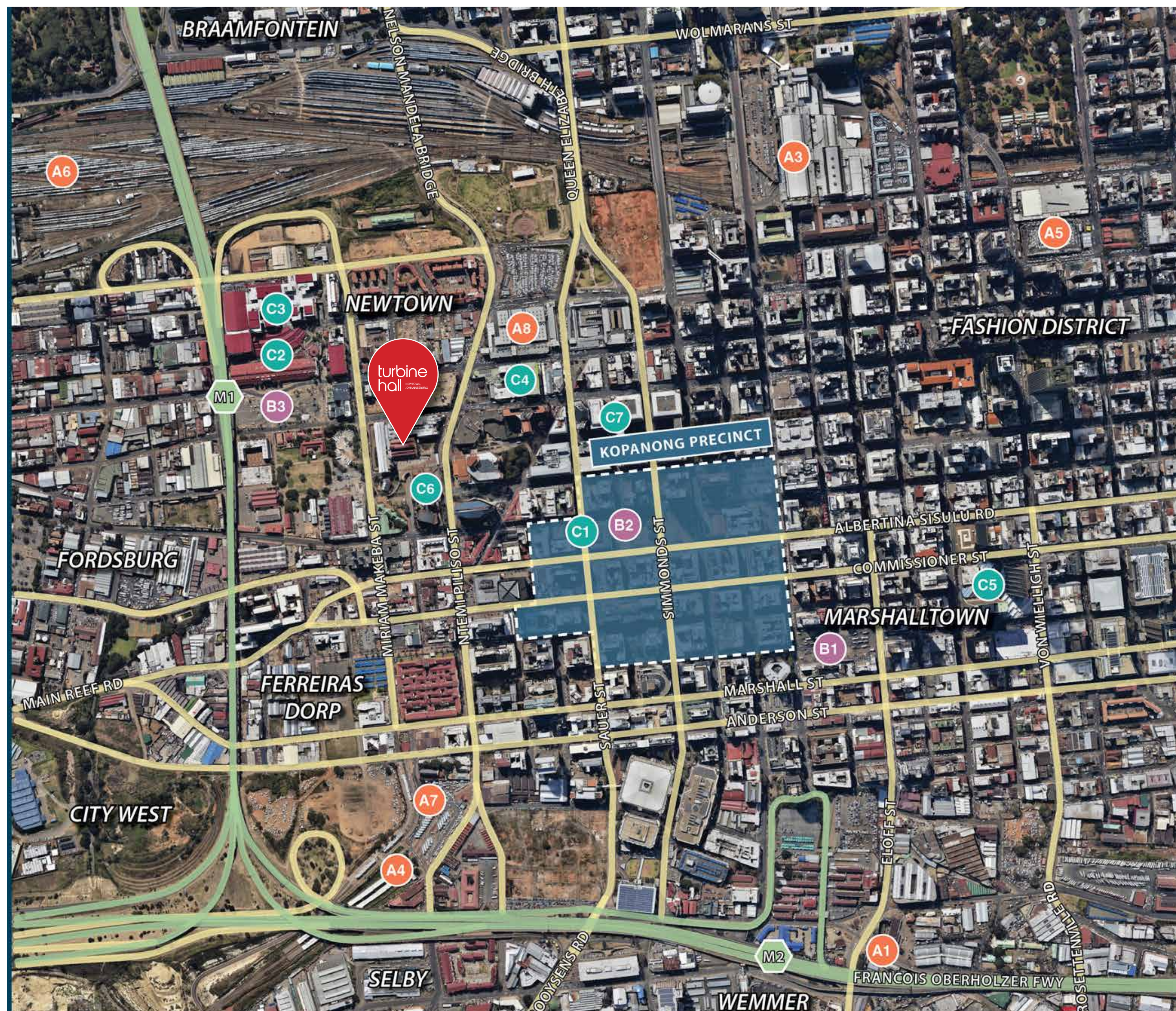


DIVERCITY COMMERCIAL





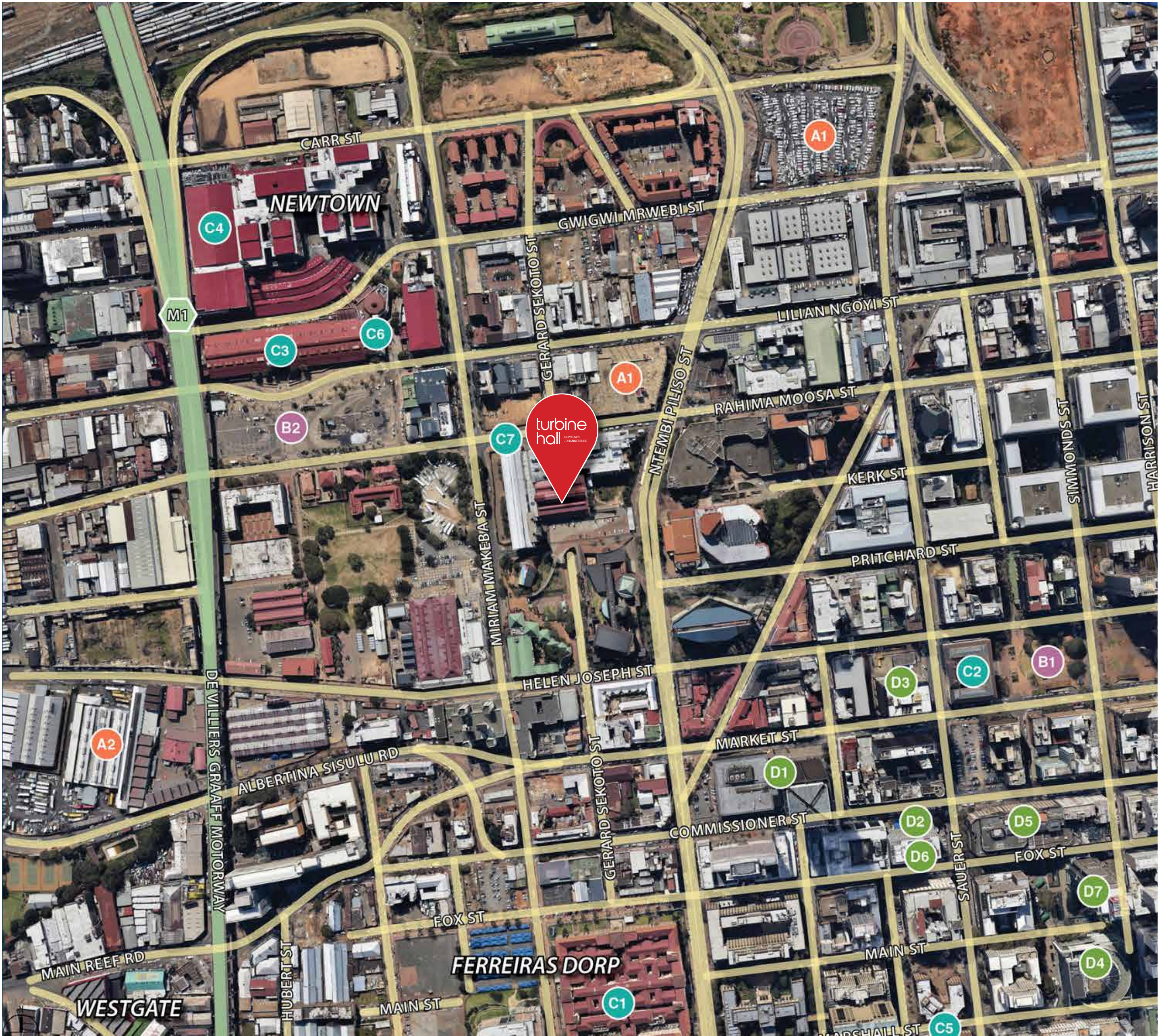
## LOCALITY & ACCESS



### POINTS OF INTEREST

- A Transport**
  - A1 Faraday Train Station
  - A2 Doornfontein Train Station
  - A3 Johannesburg Park Station
  - A4 Westgate Train Station
  - A5 Noord Taxi Rank
  - A6 Braamfontein Train Station
  - A7 Taxi Rank
  - A8 Metro Mall Taxi Rank
- B Public Squares**
  - B1 Ghandi Square
  - B2 Beyers Naude Square
  - B3 Mary Fitzgerald Square
- C Attractions**
  - C1 Johannesburg City Library
  - C2 Museum Africa
  - C3 Newtown Junction
  - C4 Newgate Shopping Mall
  - C5 Carlton Centre
  - C6 South African Reserve Bank
  - C7 FNB Bank City





**POINTS OF INTEREST**

- A Transport**
  - A1 Taxi Rank
  - A2 Newtown Zimbabwe Bus Terminus
- B Public Squares**
  - B1 Beyers Naude Square
  - B2 Mary Fitzgerald Square
- C Attractions**
  - C1 Johannesburg Central Magistrates Court
  - C2 Johannesburg City Library
  - C3 Museum Africa
  - C4 Newtown Junction
  - C5 High Court of South Africa
  - C6 Market Theatre
  - C7 The Worker's Museum
- D Government Offices**
  - D1 Gauteng Department of Health
  - D2 Department of Infrastructure Development
  - D3 Department of Local Government & Housing
  - D4 Gauteng Department of Education
  - D5 Gauteng Provincial Treasury
  - D6 Department of Co-operative Governance & Traditional Affairs
  - D7 Gauteng Department of Community Safety & Public Health
  - D8 Gauteng Province Social Development

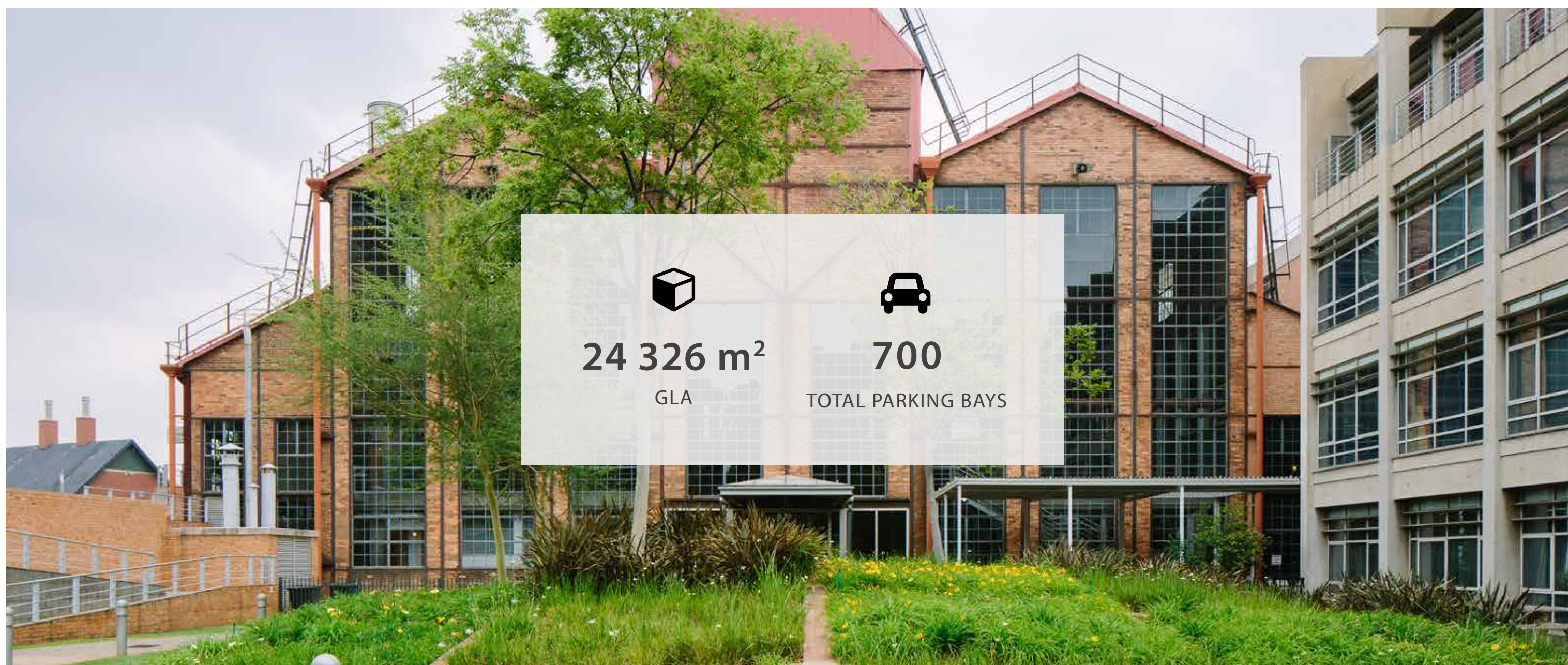
turbine  
hall

MICRO  
LOCALITY





Turbine Hall is one of the most iconic buildings in South Africa and an excellent example of reinventing a building which was deemed to be outdated. Originally constructed in 1934 as Power Station to service the booming Johannesburg CBD, the building was decommissioned in 1961 as demand outstripped the limited growth potential of the building. It was completely refurbished in 2005 and converted into an office building with a unique look and feel to it.



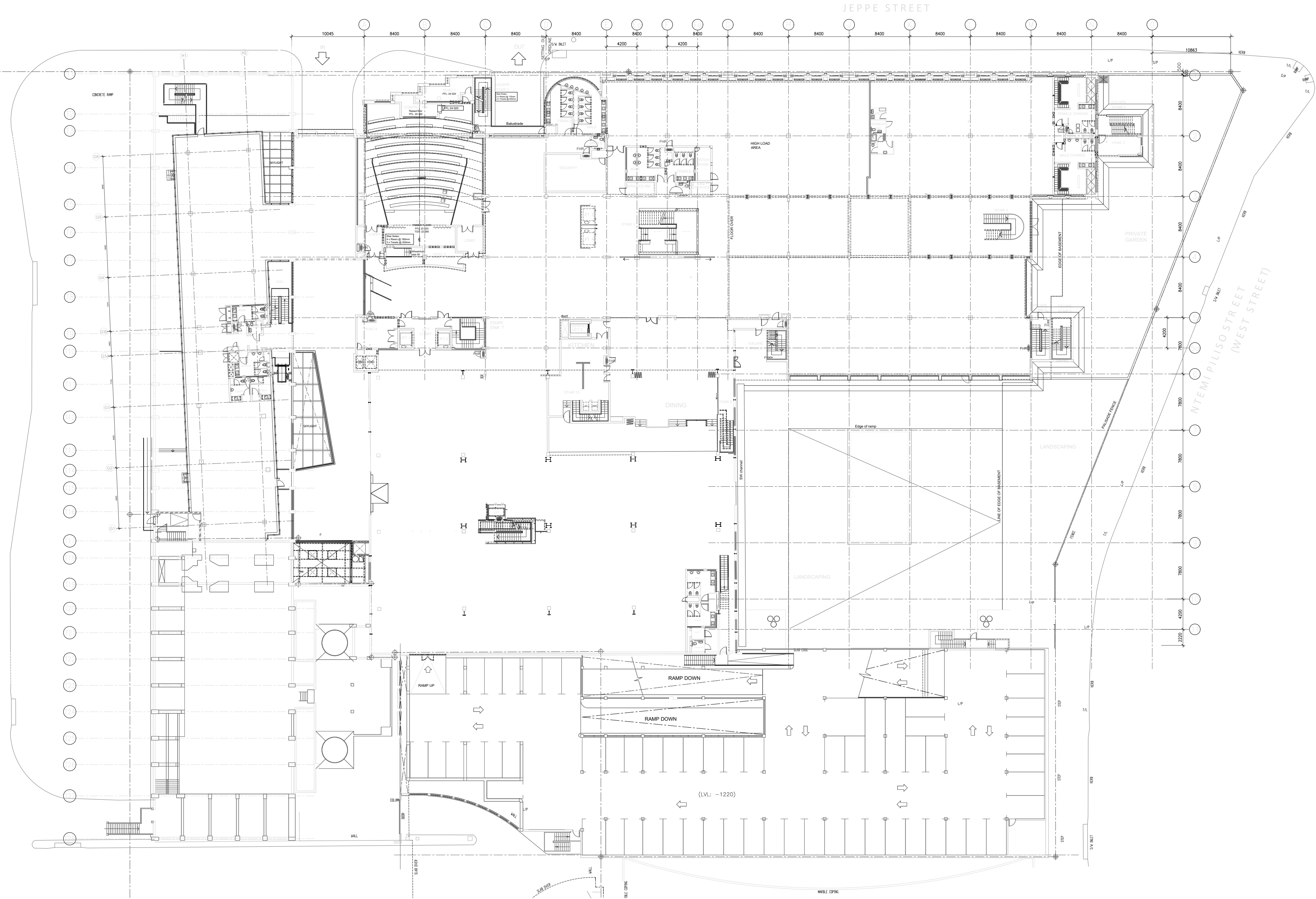
The building's unique industrial heritage has been faithfully preserved while the space has been transformed into a top-class contemporary function space for countless functions and weddings over the years.

Turbine Hall is a Divercity Urban Property Fund asset. The Divercity fund is currently backed by leading investors from South Africa and the United Kingdom.



turbine  
hall

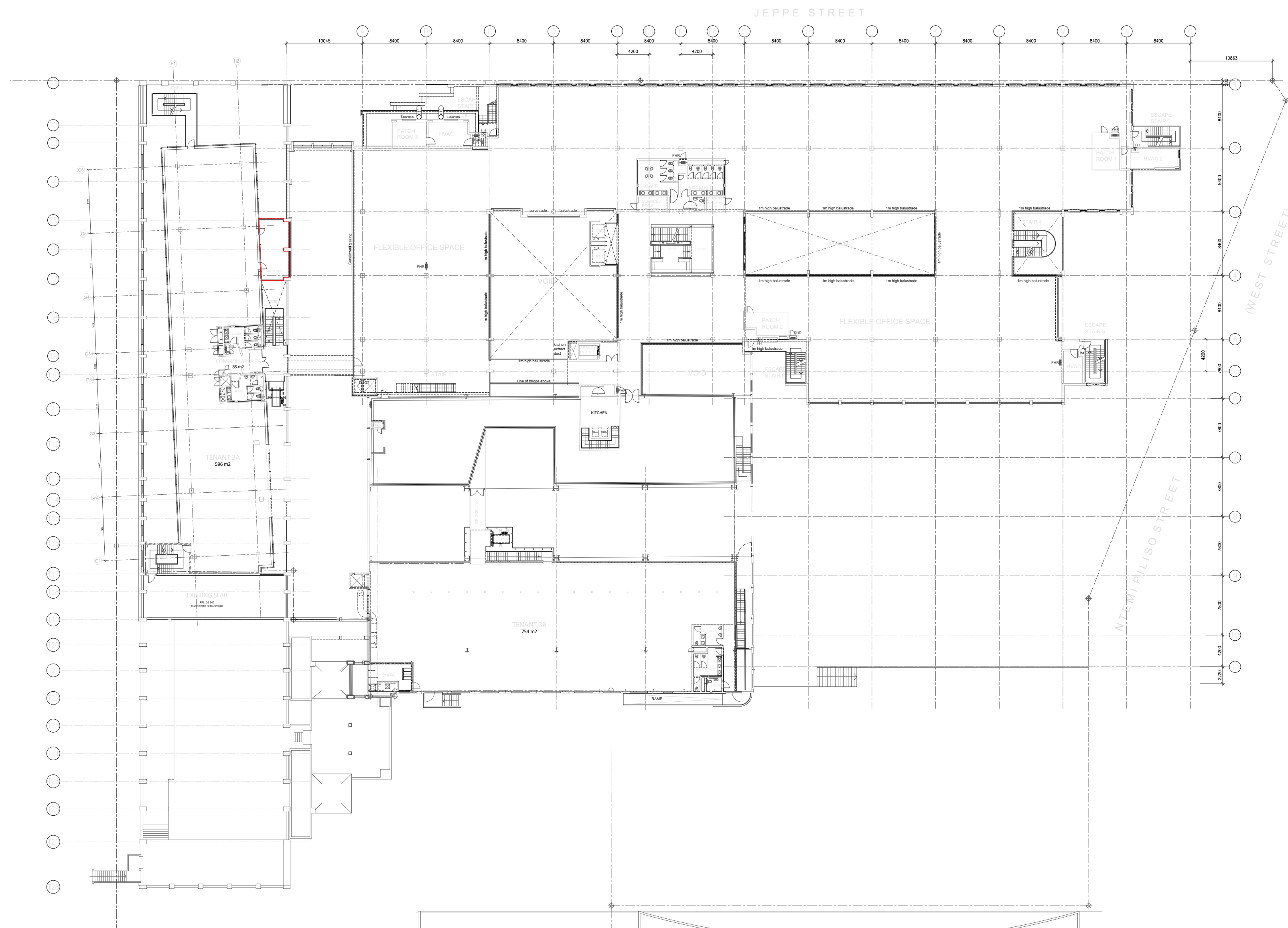
GROUND  
FLOOR





turbine  
hall

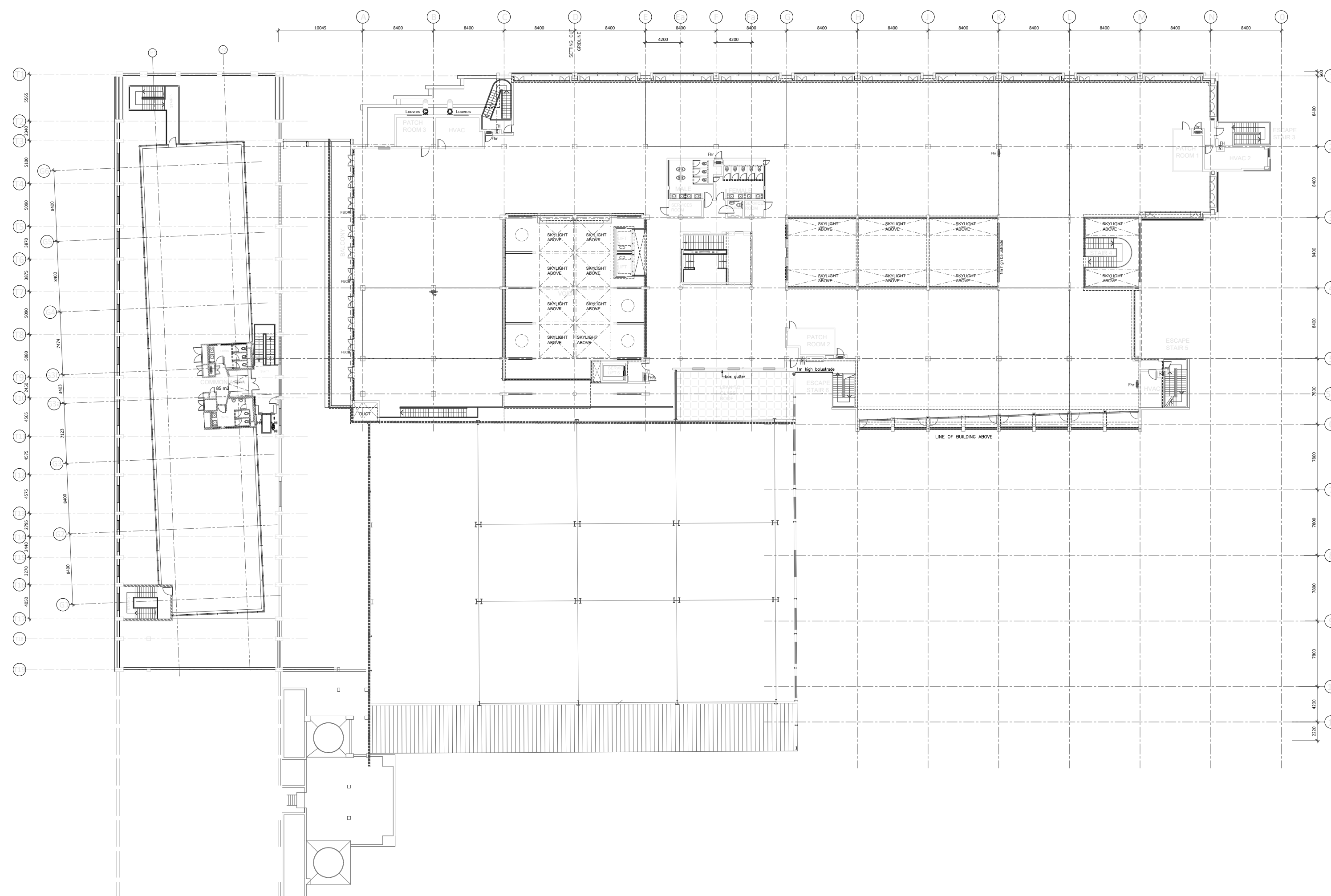
## FIRST FLOOR







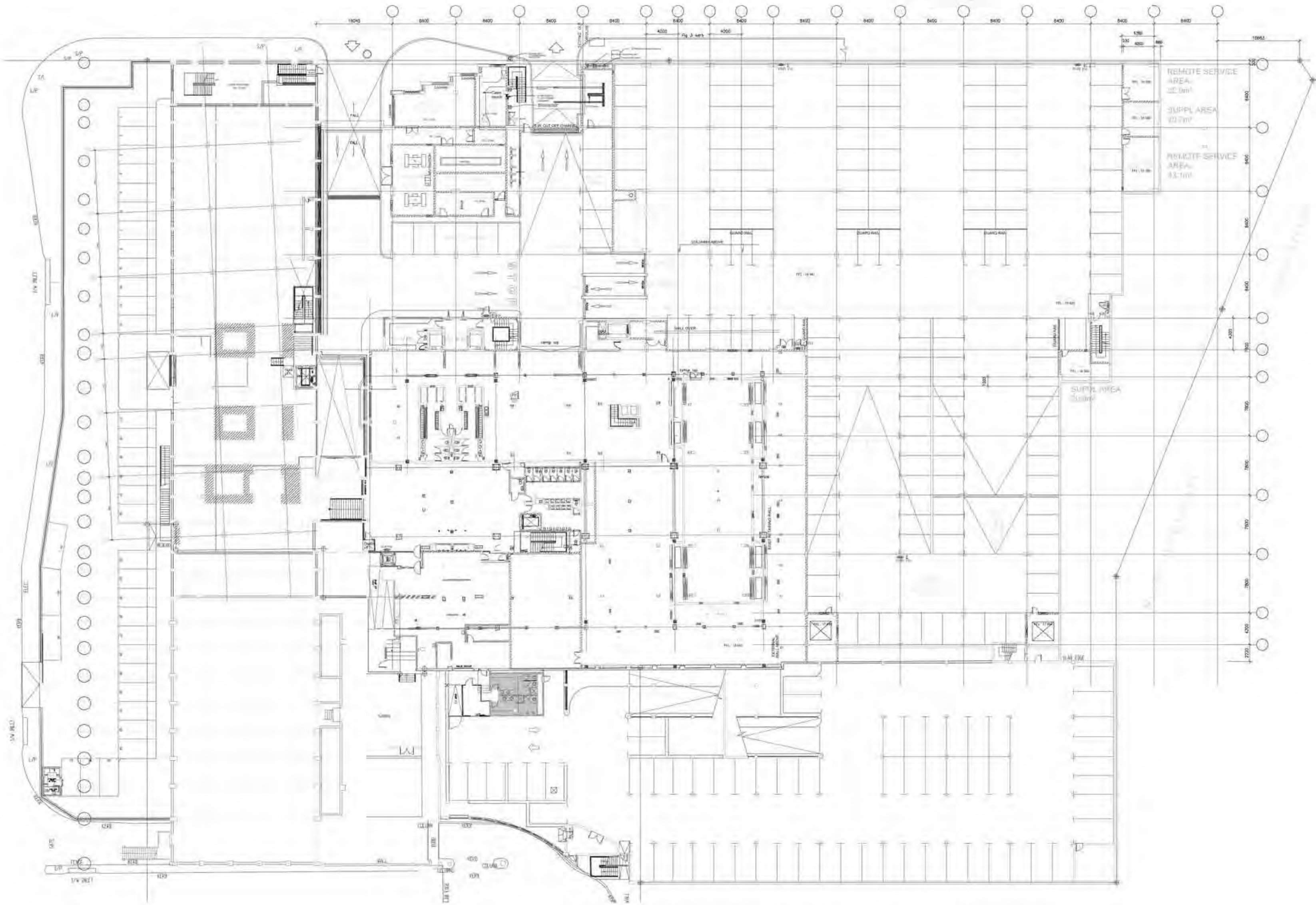




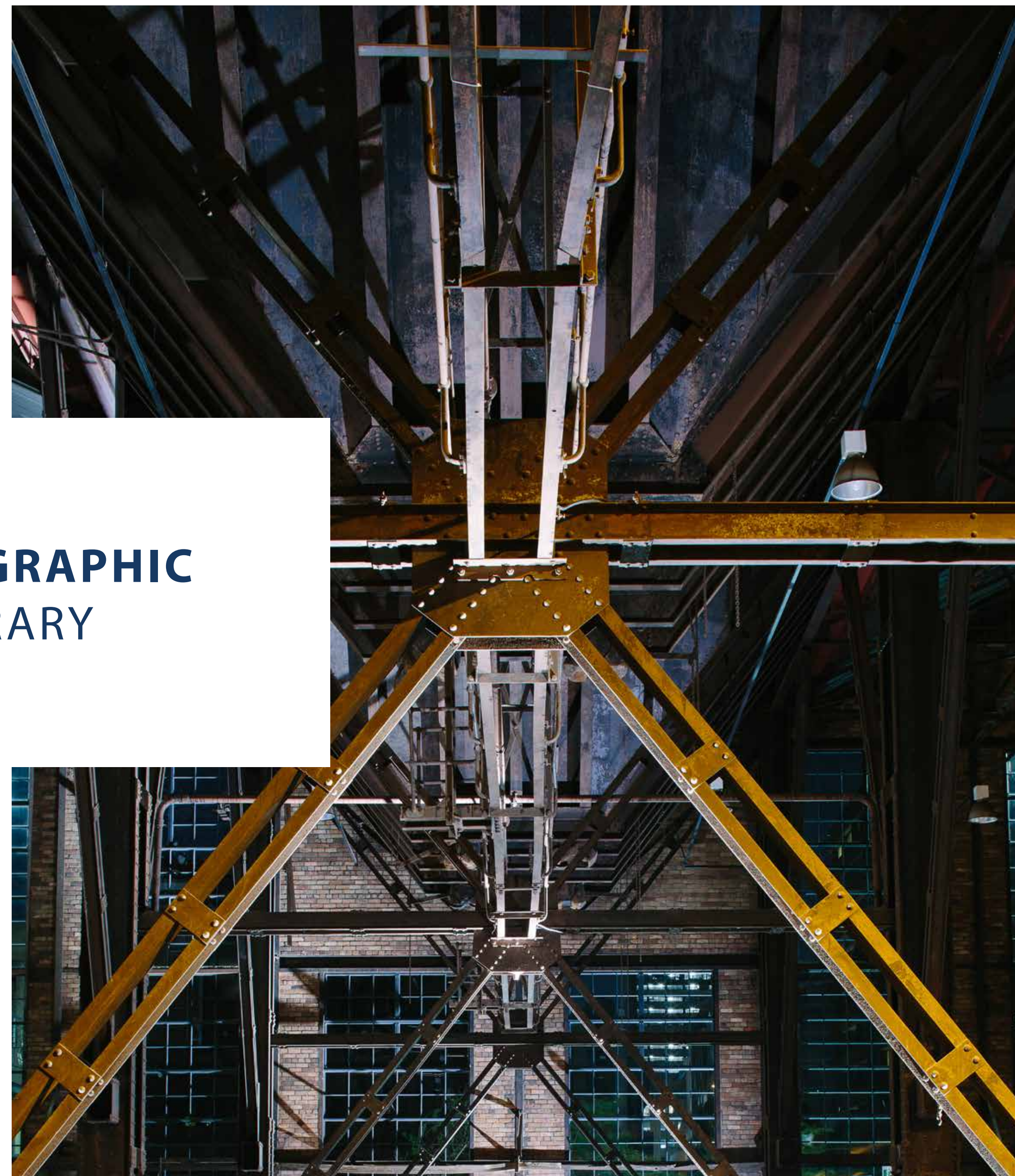
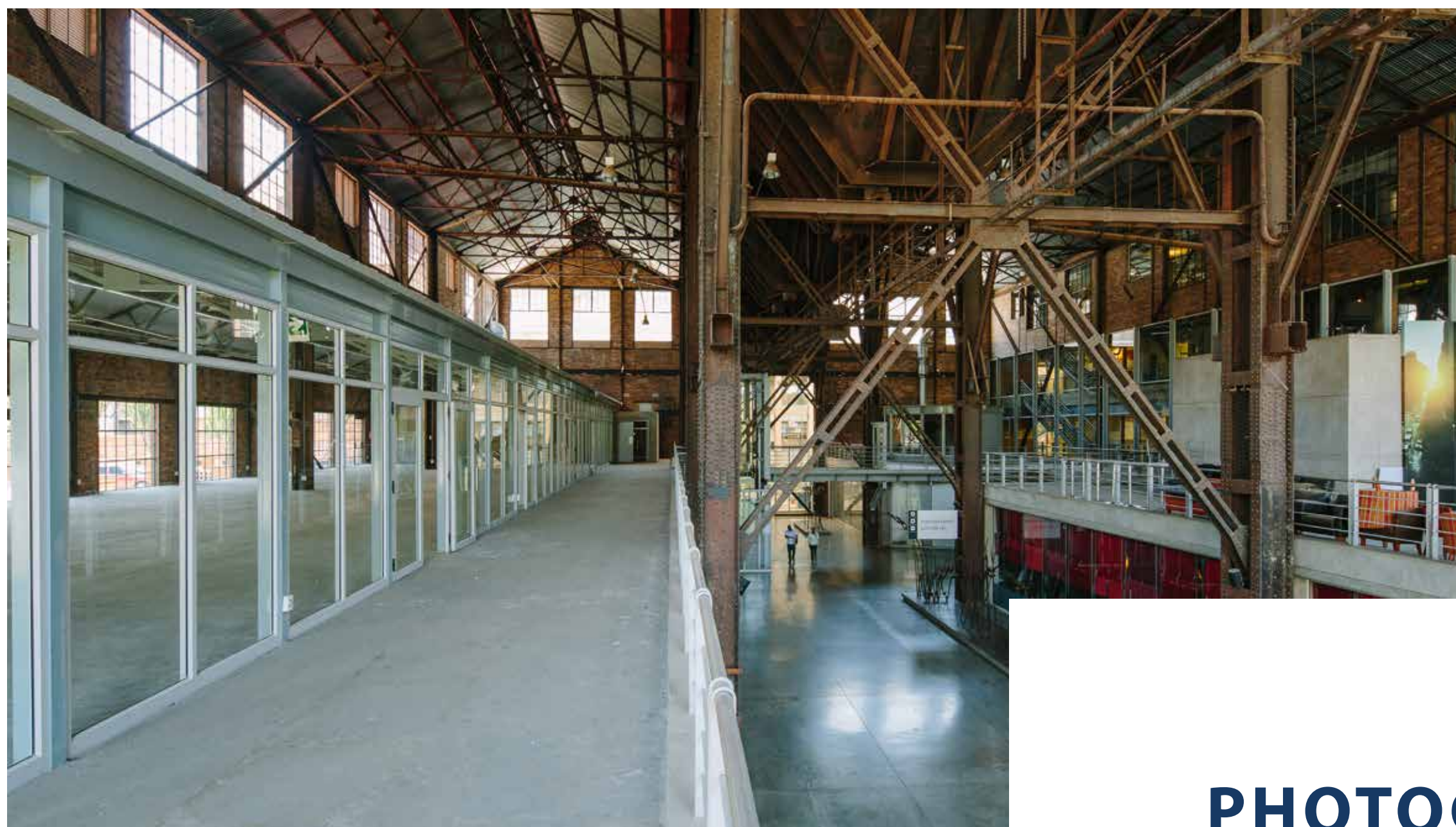


turbine  
hall

LOWER  
GROUND  
BASEMENT







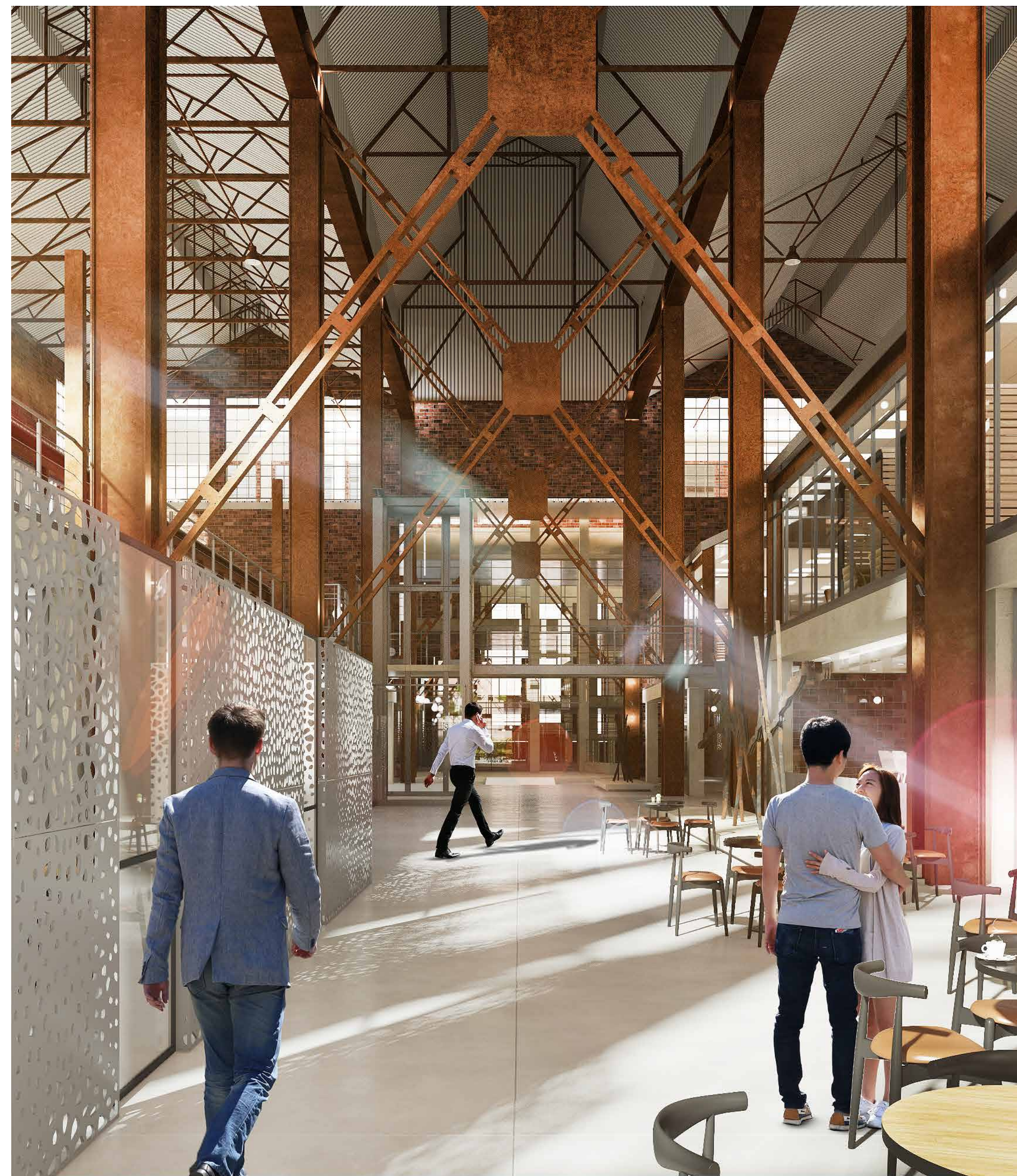
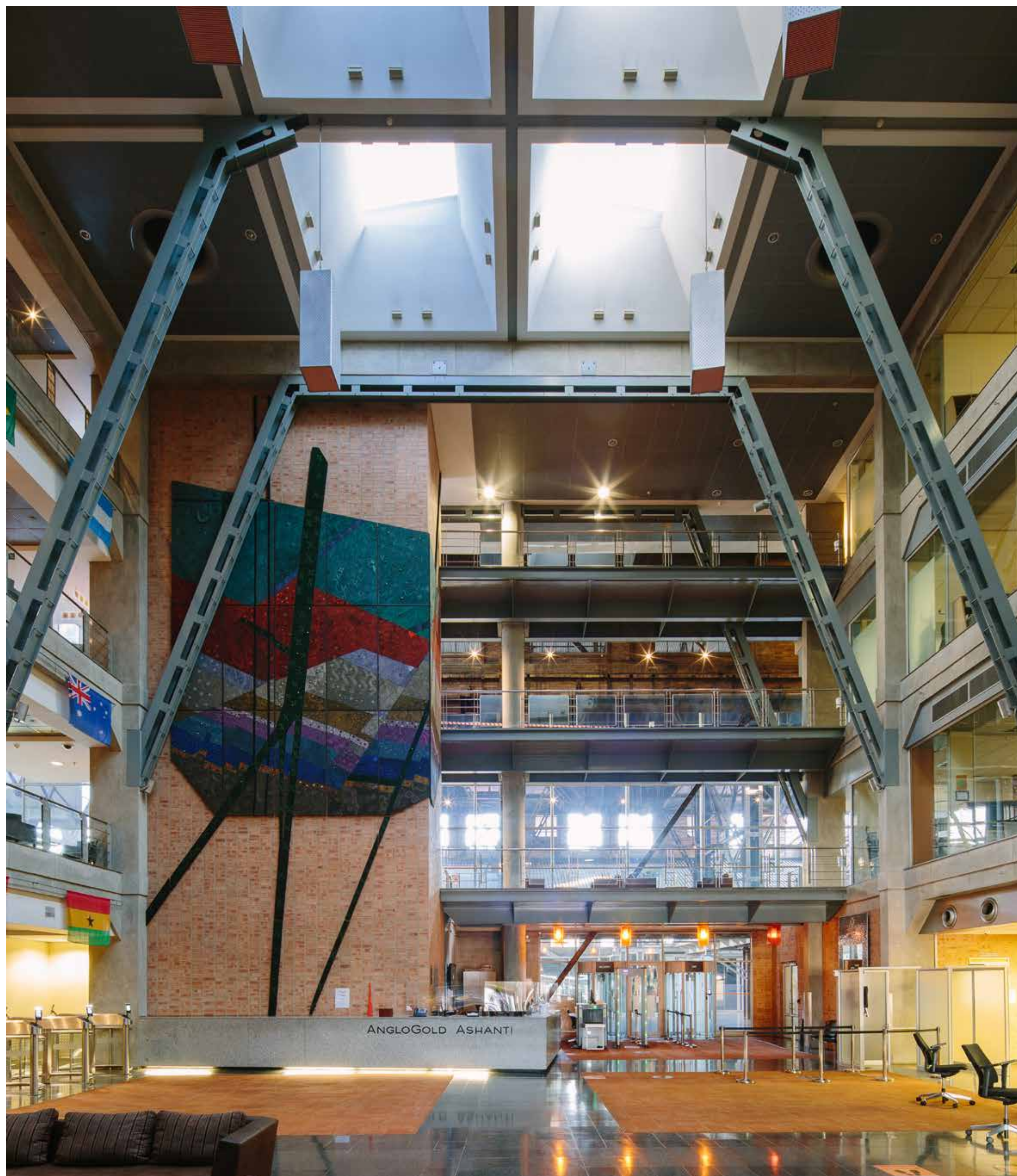
## PHOTOGRAPHIC LIBRARY



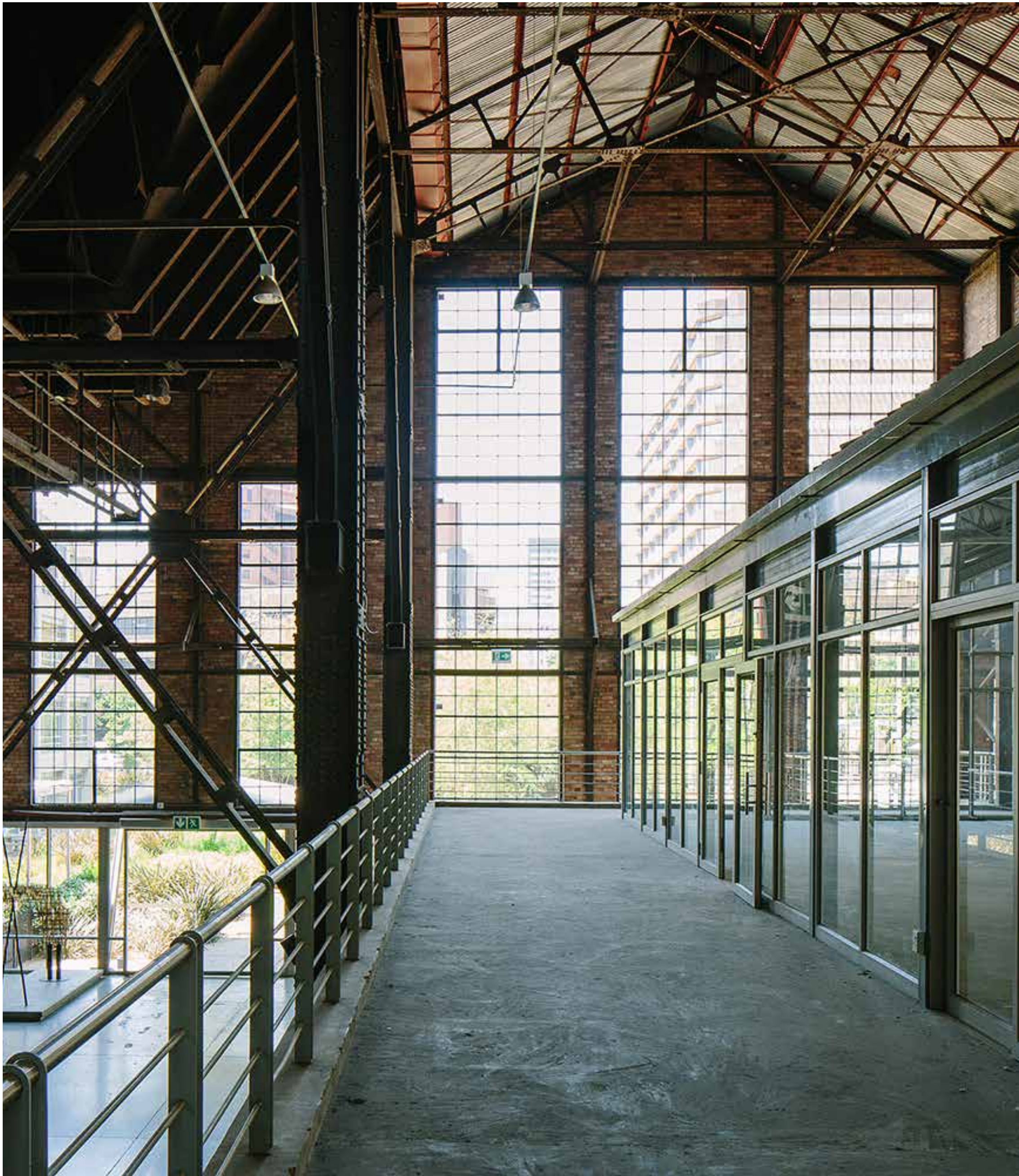




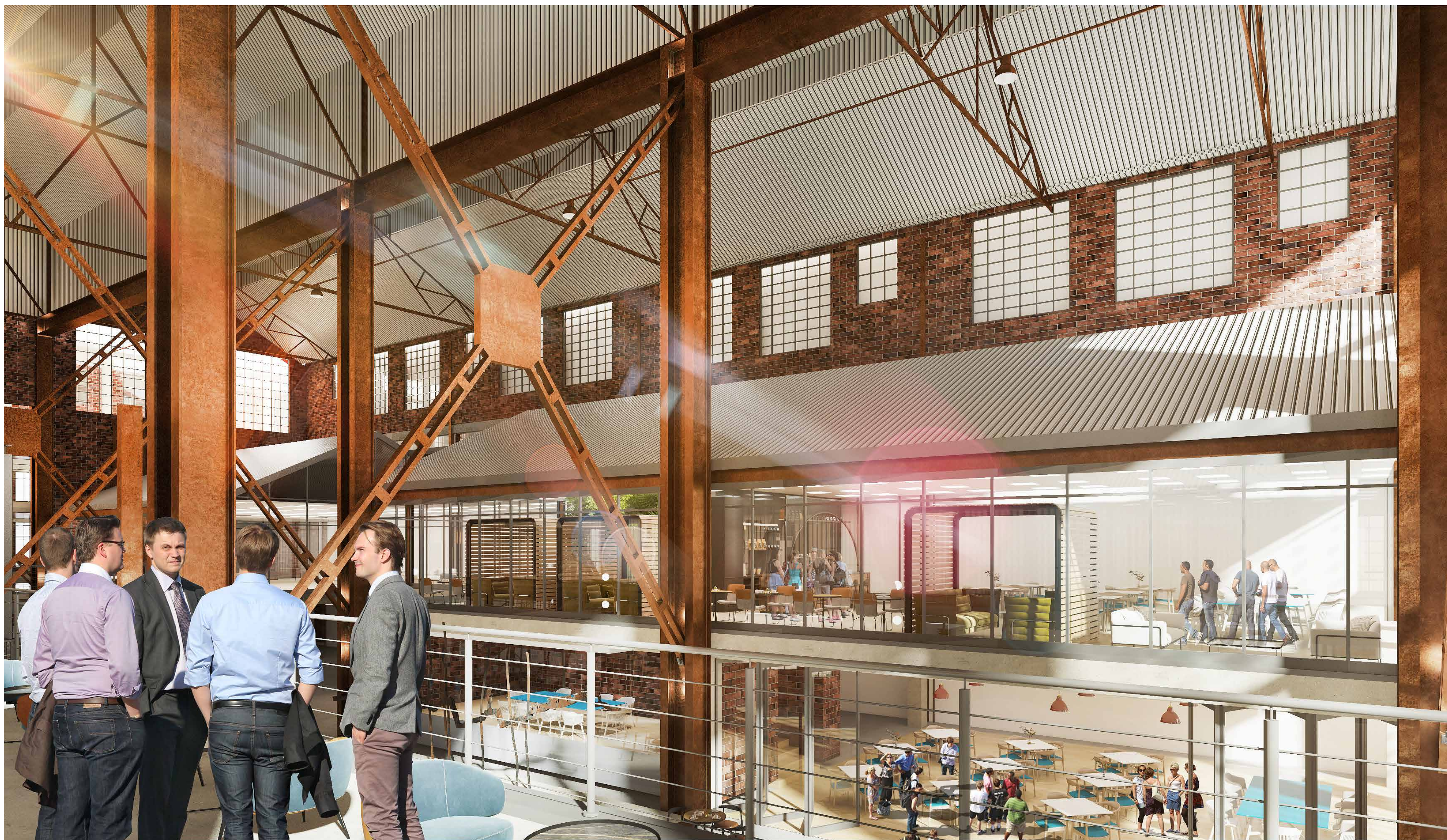
















PRETORIA OFFICE

Die Klubhuis 2nd Floor C/o 18th Street & Pinaster Ave Hazelwood, Pretoria

Tel: +27 12 471 1600

[enquiries@atterbury.co.za](mailto:enquiries@atterbury.co.za)

[atterbury.co.za](http://atterbury.co.za)

**DIVERCITY**  
URBAN PROPERTY GROUP