

South African Economy's Iconic monument

TALIS
HOUSE

JOHANNESBURG GAUTENG



6 Hollard Place, 76 Main Street, Marshall Town, Johannesburg

[ATTERBURY.CO.ZA/PORTFOLIO-ITEMS/TALIS-HOUSE/](https://atterbury.co.za/portfolio-items/talis-house/)

TALIS
HOUSE



ATTERBURY

It's a matter of association

DIVERCITY

URBAN PROPERTY GROUP

- ▶ ABOUT ATTERBURY 1
- ▶ ABOUT DIVERCITY 2
- ▶ LOCALITY & ACCESS..... 3
- ▶ TALIS HOUSE..... 4
 - ▶ ABOUT 4
 - ▶ PHOTO GALLERY 5
 - ▶ FLOOR PLANS..... 6





MASTER PLAN: DEVELOPING DREAMS

1994 saw the beginning of a new era for South Africa. It was the birth of our country as a new, true democracy and the whole world was waiting in anticipation to see to what levels the Rainbow Nation would rise.

1994 also marked the birth of Atterbury and the founders, Francois van Niekerk and Louis van der Watt, realised that there were no limits to their dreams of becoming an international force to be reckoned with. For over 27 years Atterbury has developed and managed prime commercial, industrial, retail and residential property across South Africa, the rest of the African continent and Europe.

Within the Atterbury Group you are sure to find expertise in development, asset management, leasing and corporate services. At Atterbury, we've always believed that development is the key to unlock economic and societal growth and improvement. Creative, well-managed spaces, featuring appealing aesthetics and elegant architecture within safe and accessible environments are hallmarks of all Atterbury developments.

Atterbury is renowned as a leading industrial developer evident by winning consecutive SAPOA awards for best industrial development in South Africa from 2015 to 2017 for Westcon, Hilti and Amrod at Waterfall City in Gauteng.



Divercity is a property fund that is setting a new standard for pro-poor urban development that addresses these challenges.

Founded by some of South Africa’s foremost property professionals and investors, Divercity invests exclusively in inner-city precincts.

These precincts are well-located, affordable housing weighted, amenity-rich neighbourhoods that offer low and middle income households the opportunity to live in wholesome urban environments, close to where they work and with access to all essential amenities.

This model is in stark contrast to the current dominant mode of affordable housing delivery in South Africa and most developing contexts, where lower income households are confined to the urban periphery – far from opportunities and essential services.

JEWEL CITY PRECINCT



TOWERS MAIN



DIVERCITY

URBAN PROPERTY FUND

DIVERCITY RESIDENTIAL



DIVERCITY COMMERCIAL



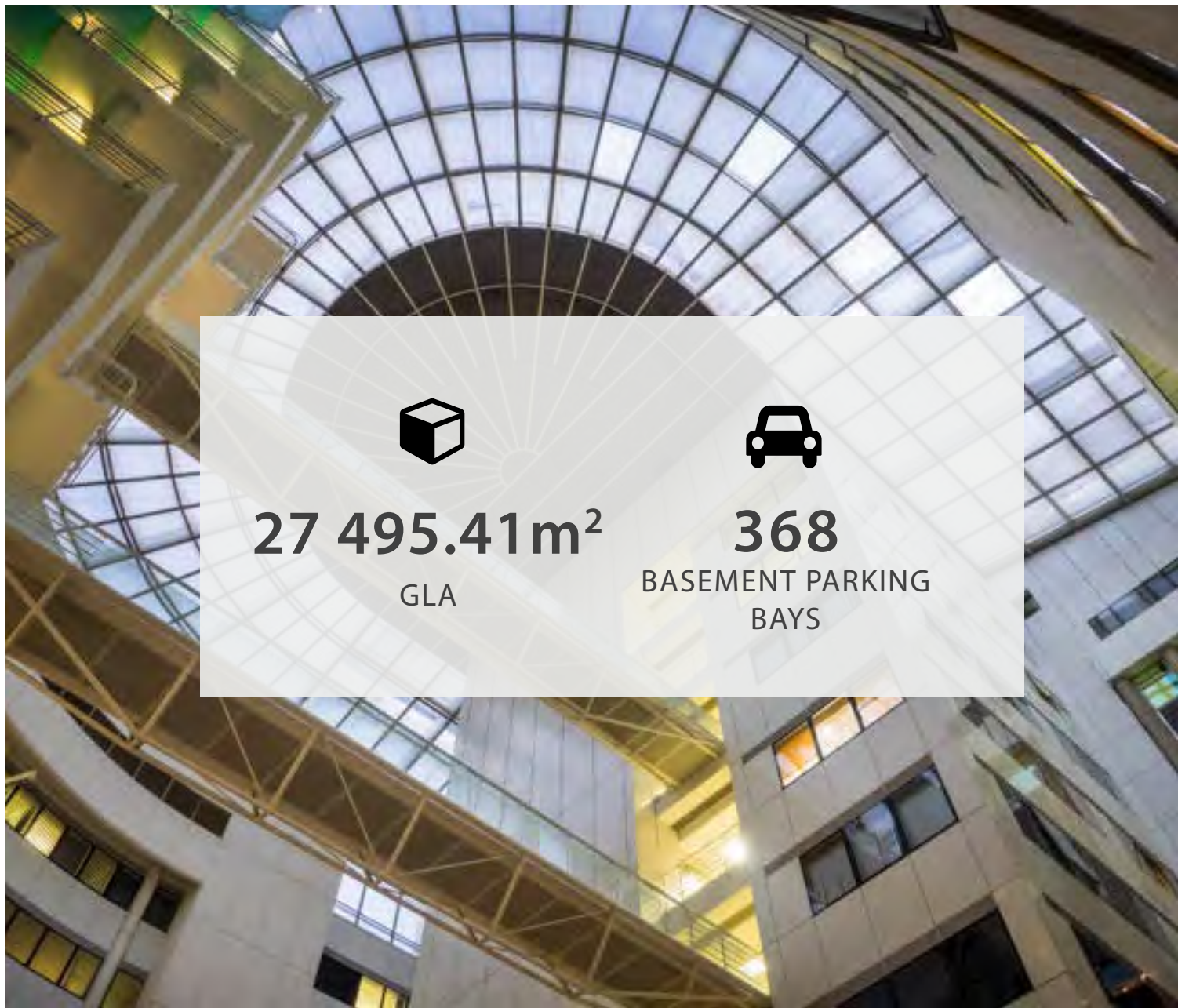


LOCALITY
& ACCESS



Situated in the heart of the financial and mining precinct in Johannesburg CBD, Talis House is a 10 storey building currently being tenanted by the Gauteng Department of Education. Previously the home of Gencor, the refurbished building was opened by Nelson Mandela and FW De Klerk in 1995 which marked the beginning of a new era in South Africa.

Flanked by the magnificent Hollard Street Fountain, the building is iconic as a monument to the founding drivers of the South African economy.





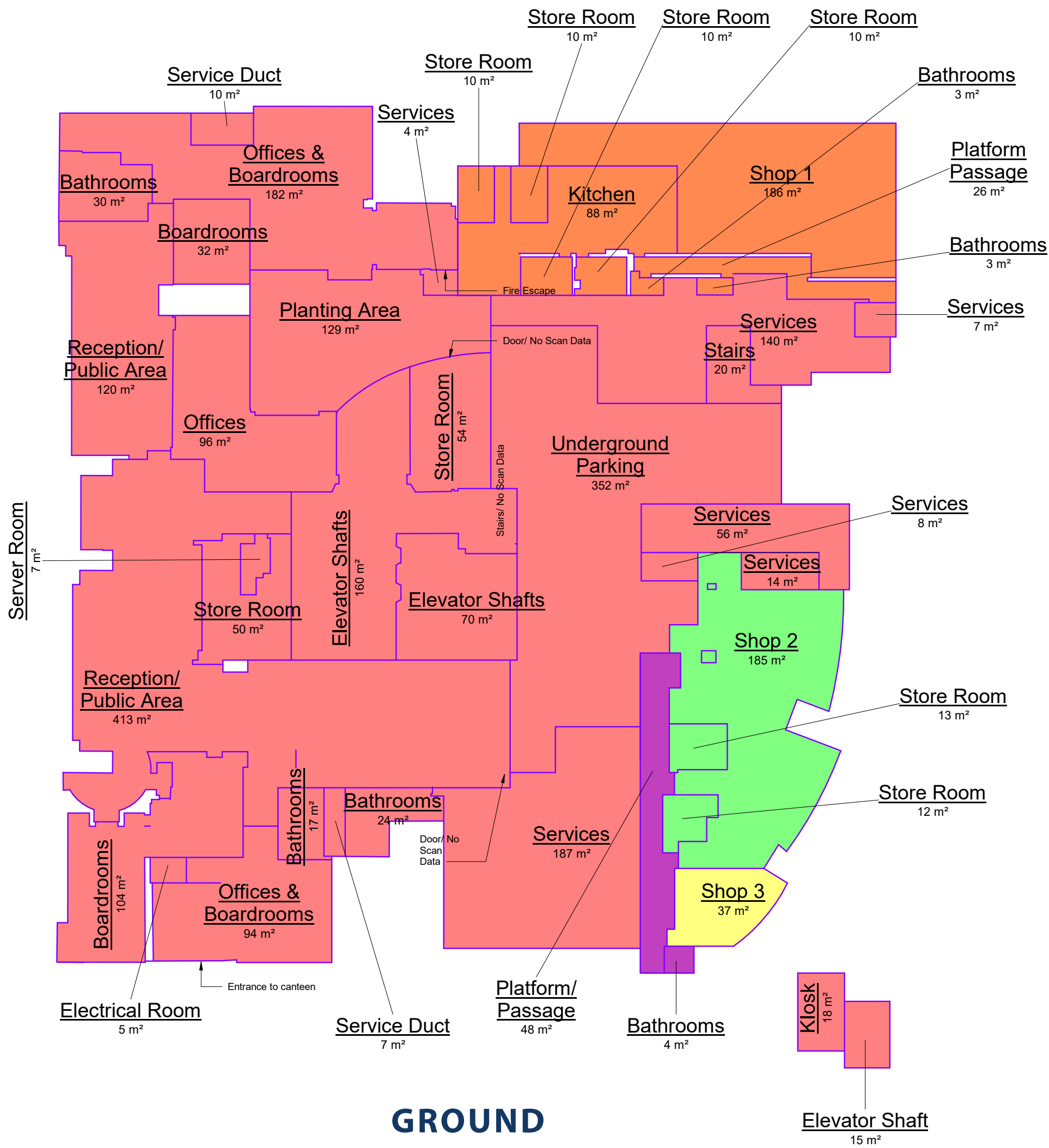
**PHOTOGRAPHIC
LIBRARY**



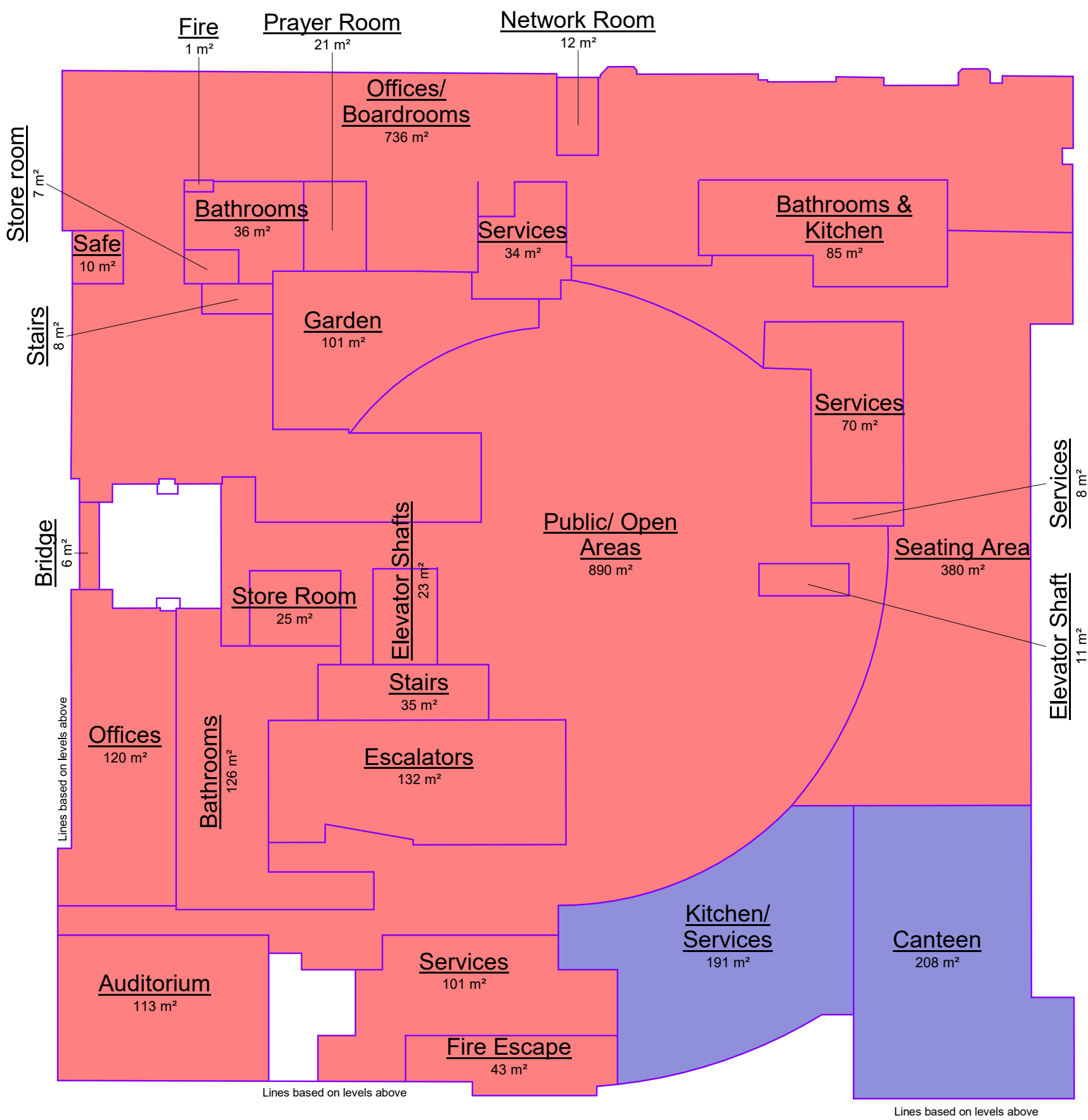


GROUND
& FIRST
FLOOR

- UNATTENDED
- NEDBANK
- UNATTENDED
- NEDBANK
- UNATTENDED
- NEDBANK



GROUND

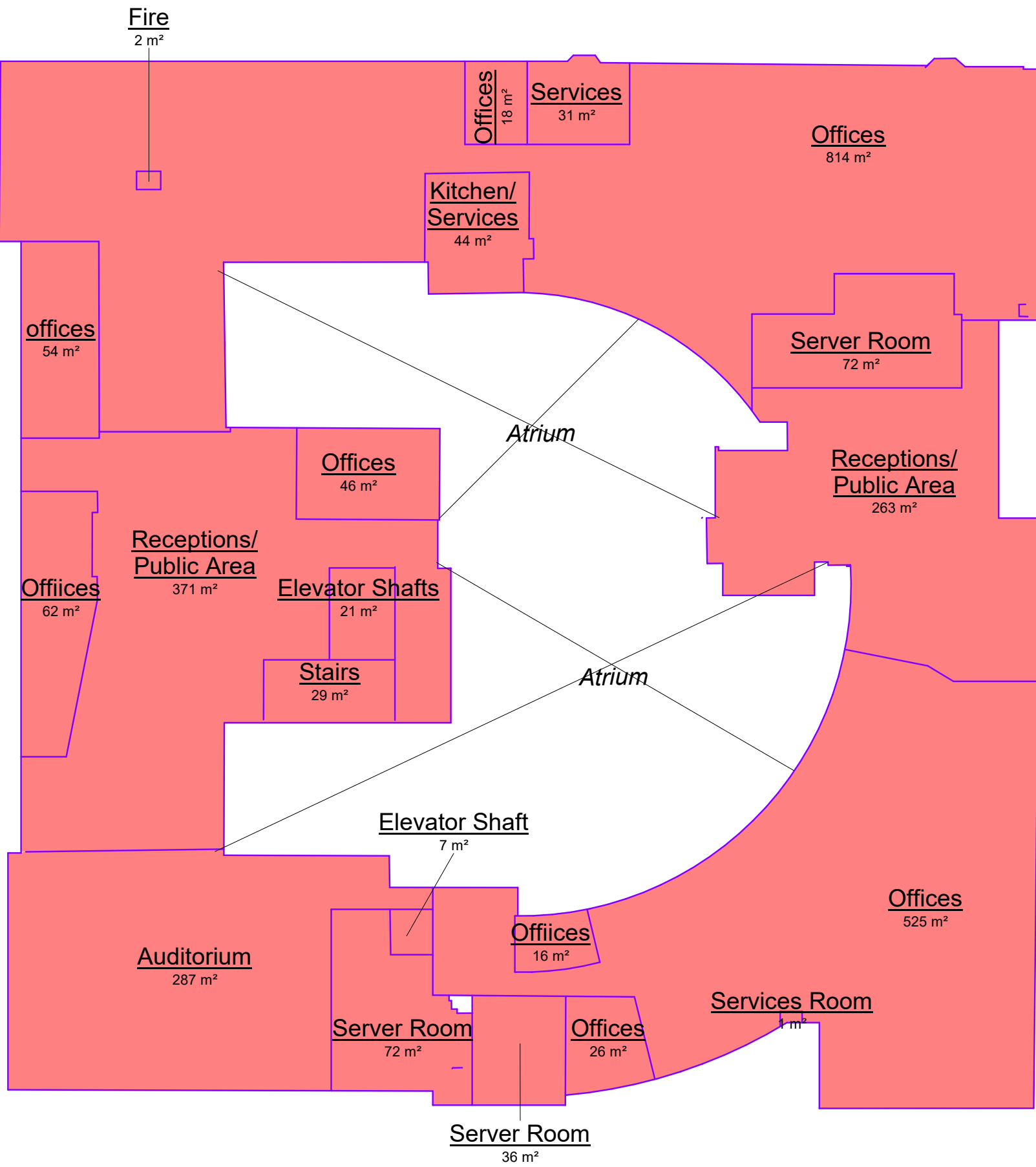


FIRST

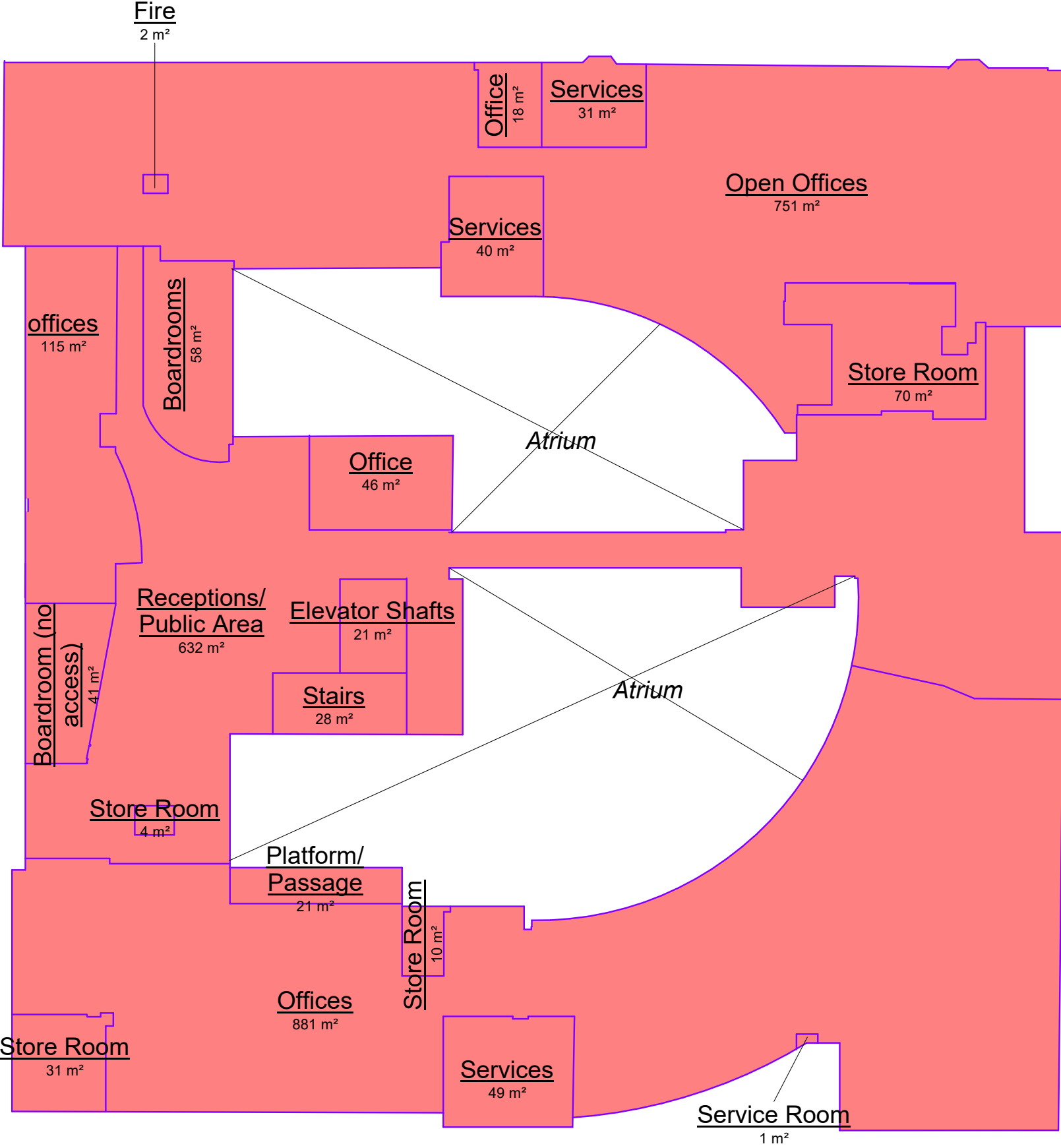


SECOND &
THIRD
FLOOR

- UNATTENDED
- NEDBANK
- UNATTENDED
- NEDBANK
- UNATTENDED
- NEDBANK



SECOND

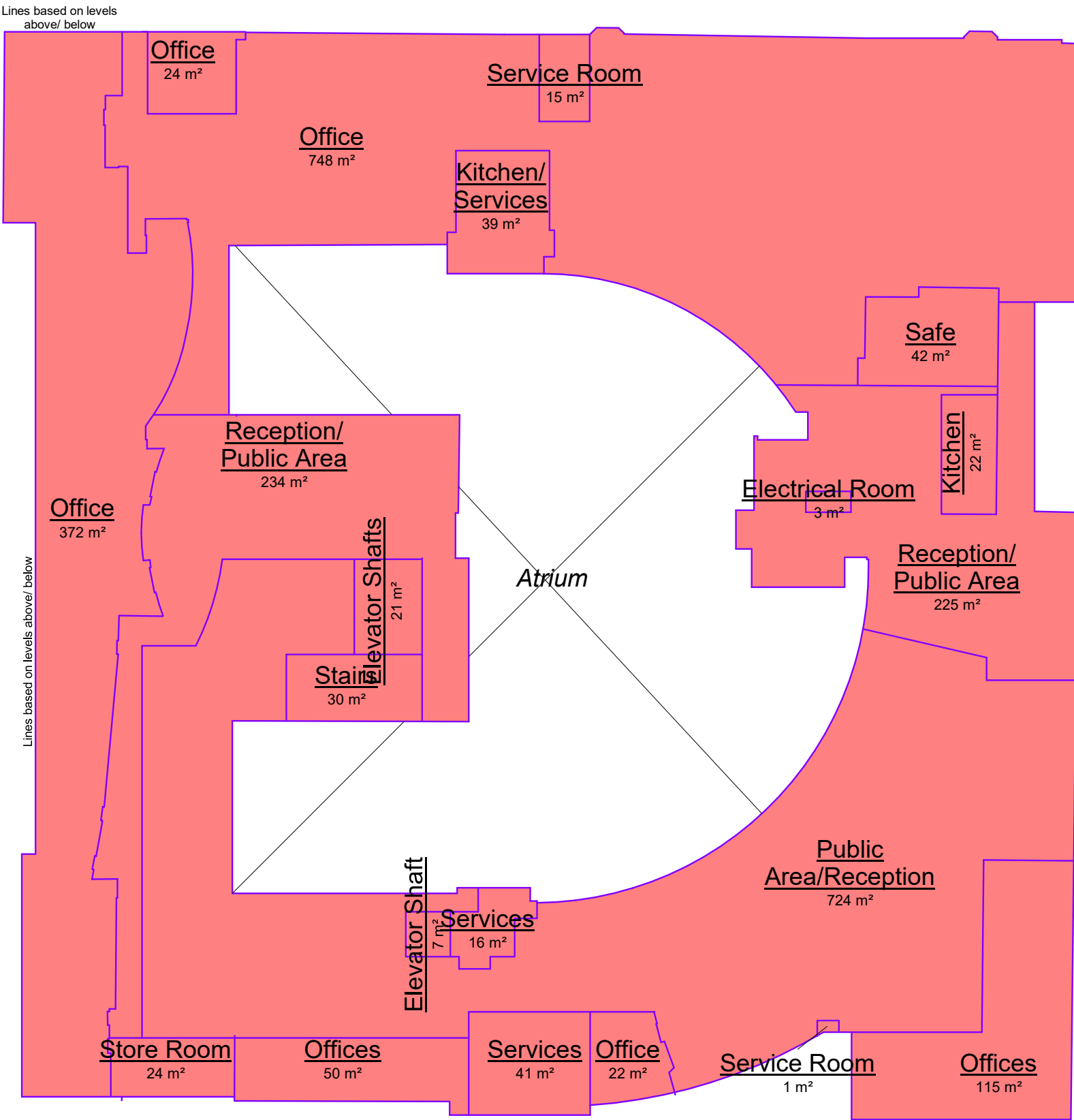


THIRD

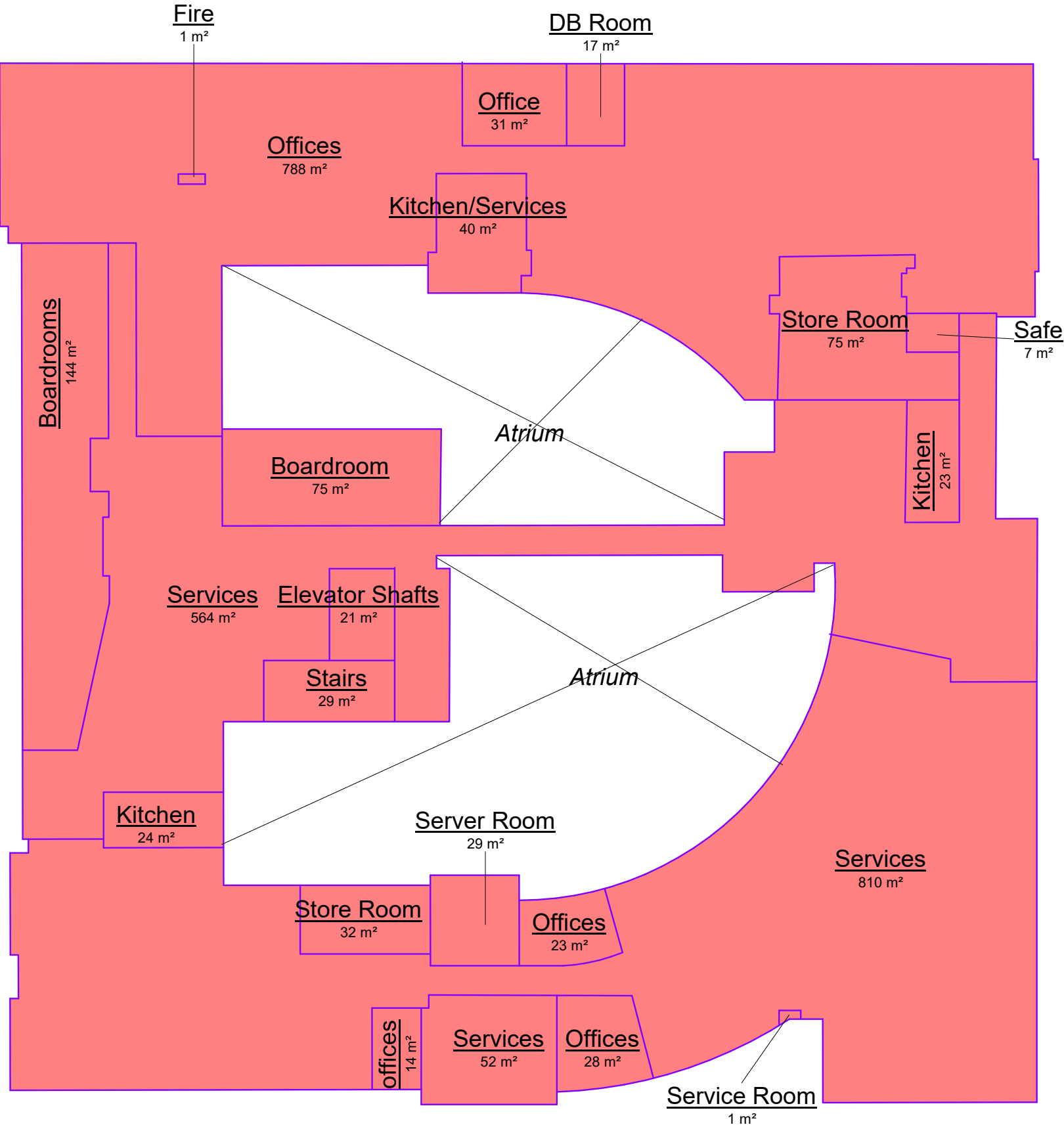


FOURTH & FIFTH FLOOR

- UNATTENDED
- NEDBANK
- UNATTENDED
- NEDBANK
- UNATTENDED
- NEDBANK



FOURTH

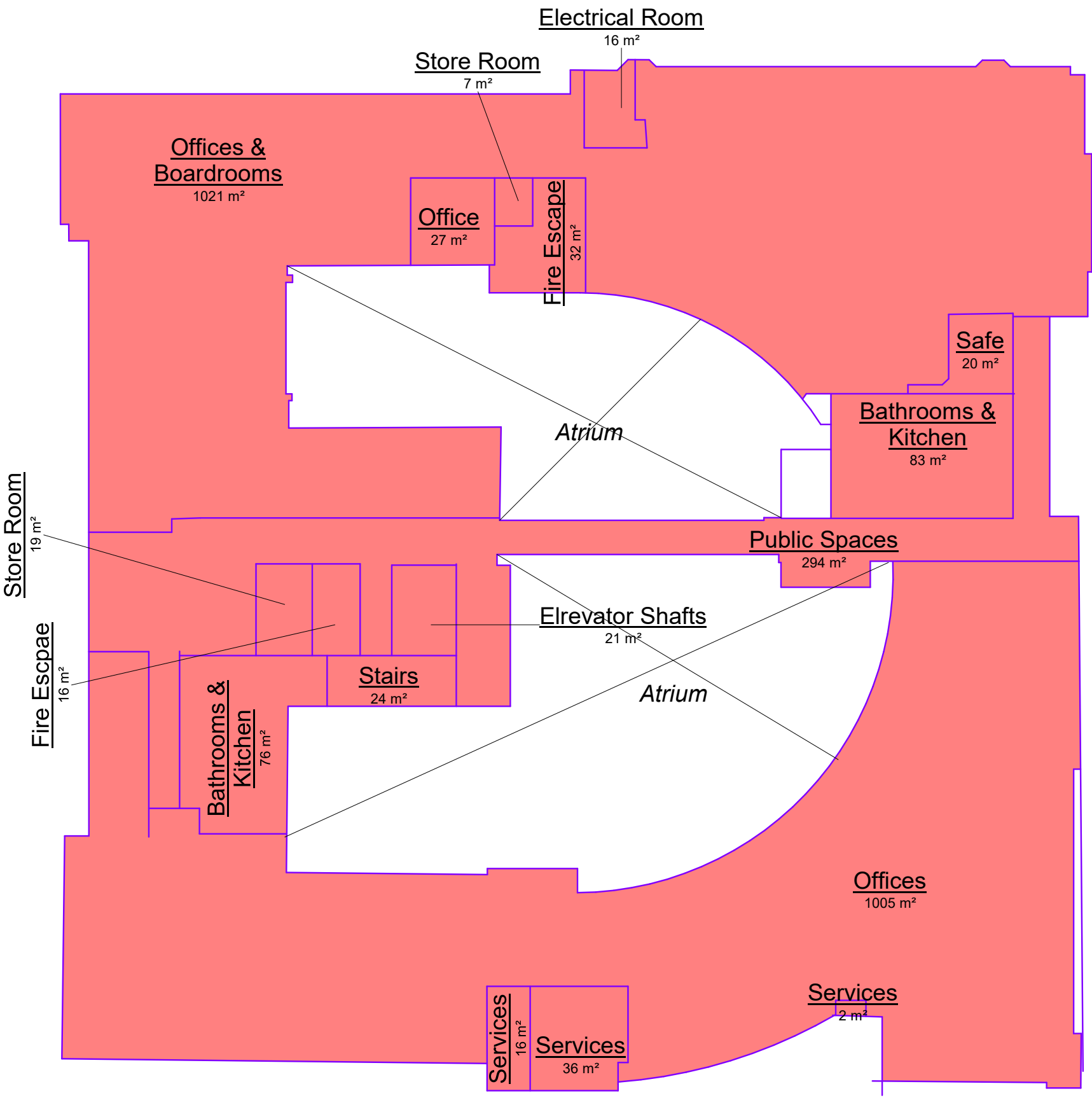
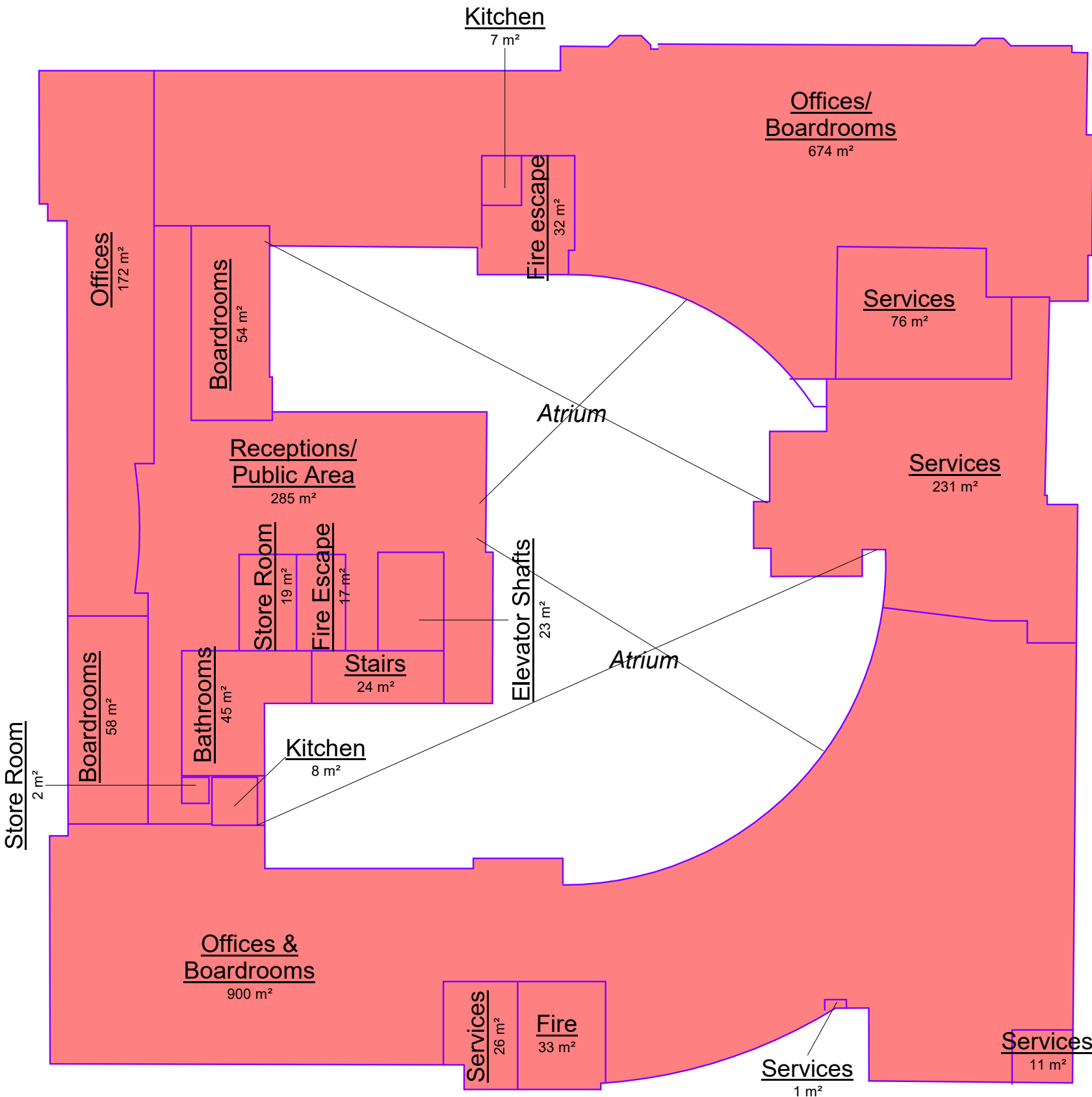


FIFTH



SIXTH &
SEVENTH
FLOOR

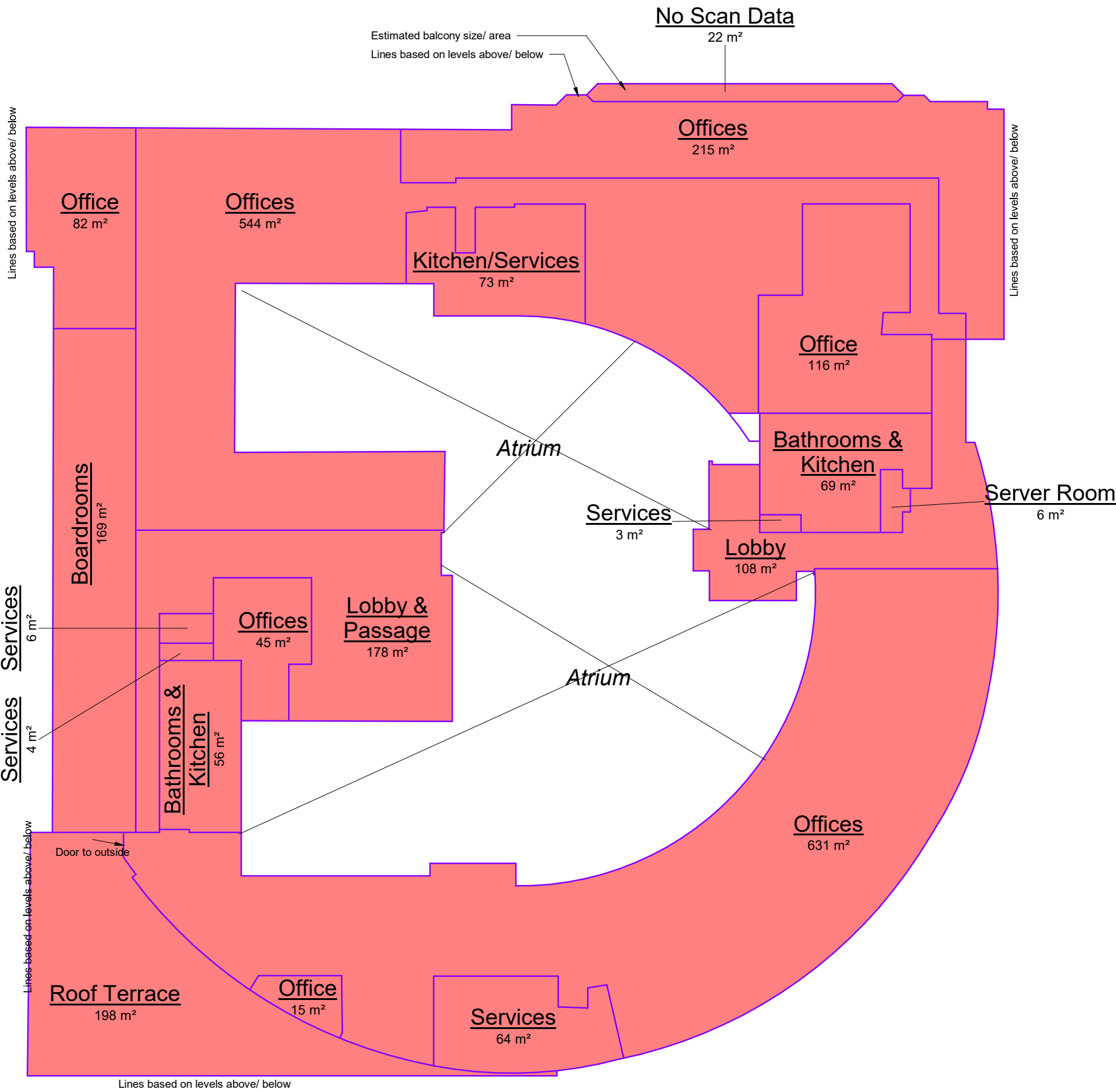
- UNATTENDED
- NEDBANK
- UNATTENDED
- NEDBANK
- UNATTENDED
- NEDBANK



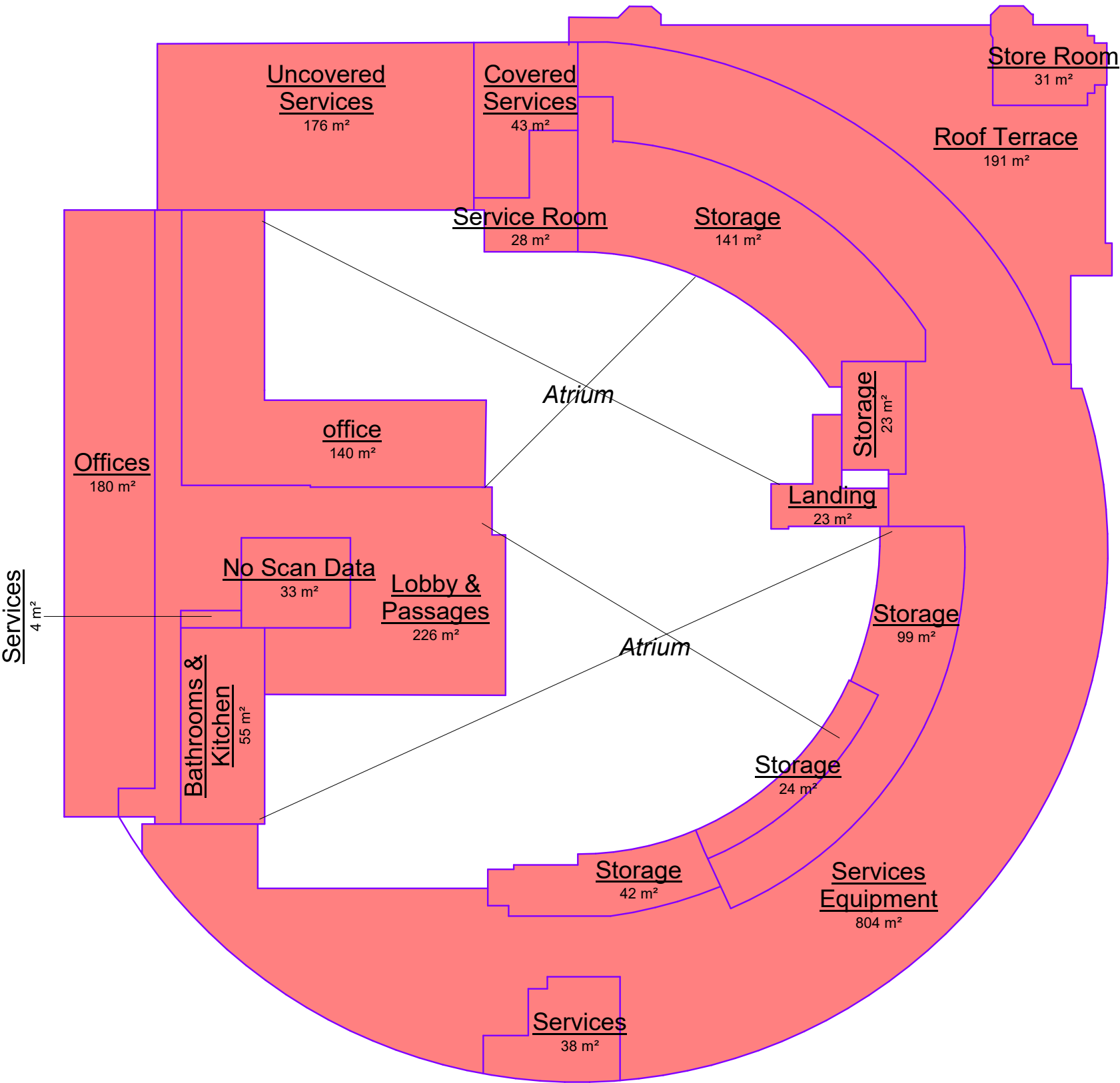


EIGHTH & NINTH FLOOR

- UNATTENDED
- NEDBANK
- UNATTENDED
- NEDBANK
- UNATTENDED
- NEDBANK



EIGHTH

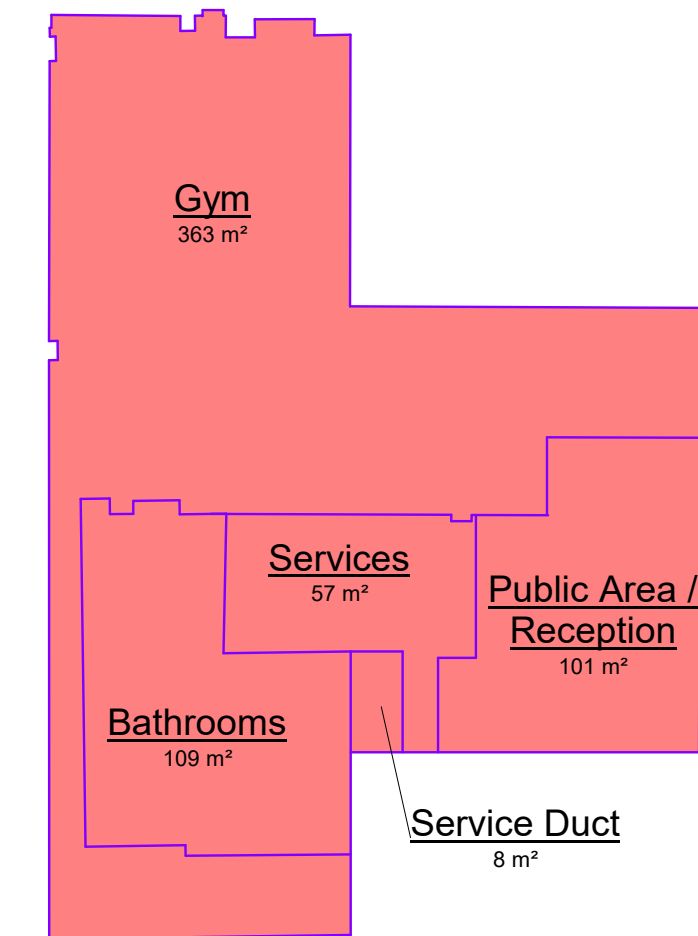


NINTH

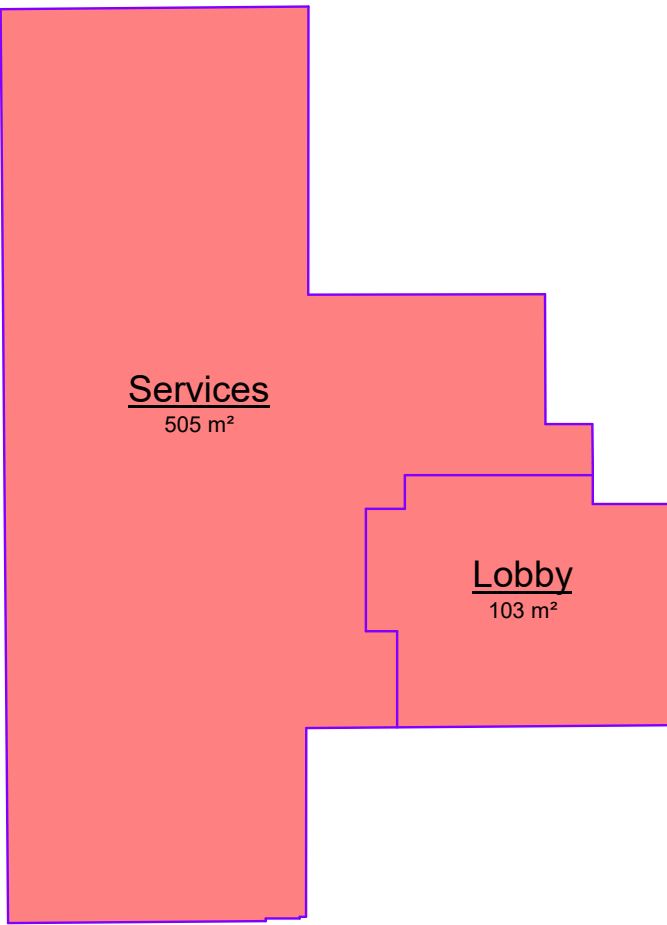


**TENTH
FLOOR
& PLANT
ROOM**

- UNATTENDED
- NEDBANK
- UNATTENDED
- NEDBANK
- UNATTENDED
- NEDBANK



TENTH



**PLANT
ROOM**



PRETORIA OFFICE

Die Klubhuis 2nd Floor C/o 18th Street & Pinaster Ave Hazelwood, Pretoria

Tel: +27 12 471 1600

enquiries@atterbury.co.za

atterbury.co.za

DIVERCITY
URBAN PROPERTY GROUP