

# A unique retail experience



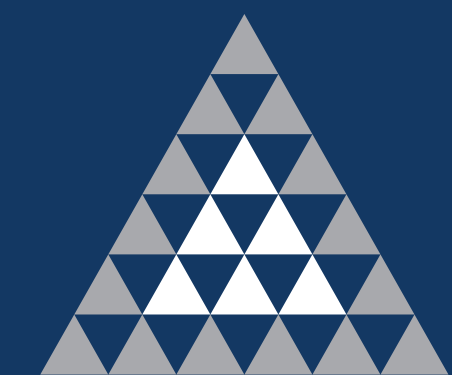
Avenida da Marginal, Wimbe, Pemba, Mozambique

[PEMBASHOPPING.CO.MZ](http://PEMBASHOPPING.CO.MZ)



**PEMBA**  
shopping

**PEMBA MOZAMBIQUE**



**ATTERBURY**

*It's a matter of association*



- ▶ ABOUT ATTERBURY..... 1
- ▶ LOCALITY & ACCESS..... 2
- ▶ INTRODUCTION: PEMBA SHOPPING..... 3
- ▶ PHOTOGRAPHIC LIBRARY ..... 4
- ▶ LEASING PLAN..... 5







## MASTER PLAN: DEVELOPING DREAMS

1994 saw the beginning of a new era for South Africa. It was the birth of our country as a new, true democracy and the whole world was waiting in anticipation to see to what levels the Rainbow Nation would rise.

1994 also marked the birth of Atterbury and the founders, Francois van Niekerk and Louis van der Watt, realised that there were no limits to their dreams of becoming an international force to be reckoned with. For over 27 years Atterbury has developed and managed prime commercial, industrial, retail and residential property across South Africa, the rest of the African continent and Europe.

Within the Atterbury Group you are sure to find expertise in development, asset management, leasing and corporate services. At Atterbury, we've always believed that development is the key to unlock economic and societal growth and improvement. Creative, well-managed spaces, featuring appealing aesthetics and elegant architecture within safe and accessible environments are hallmarks of all Atterbury developments.

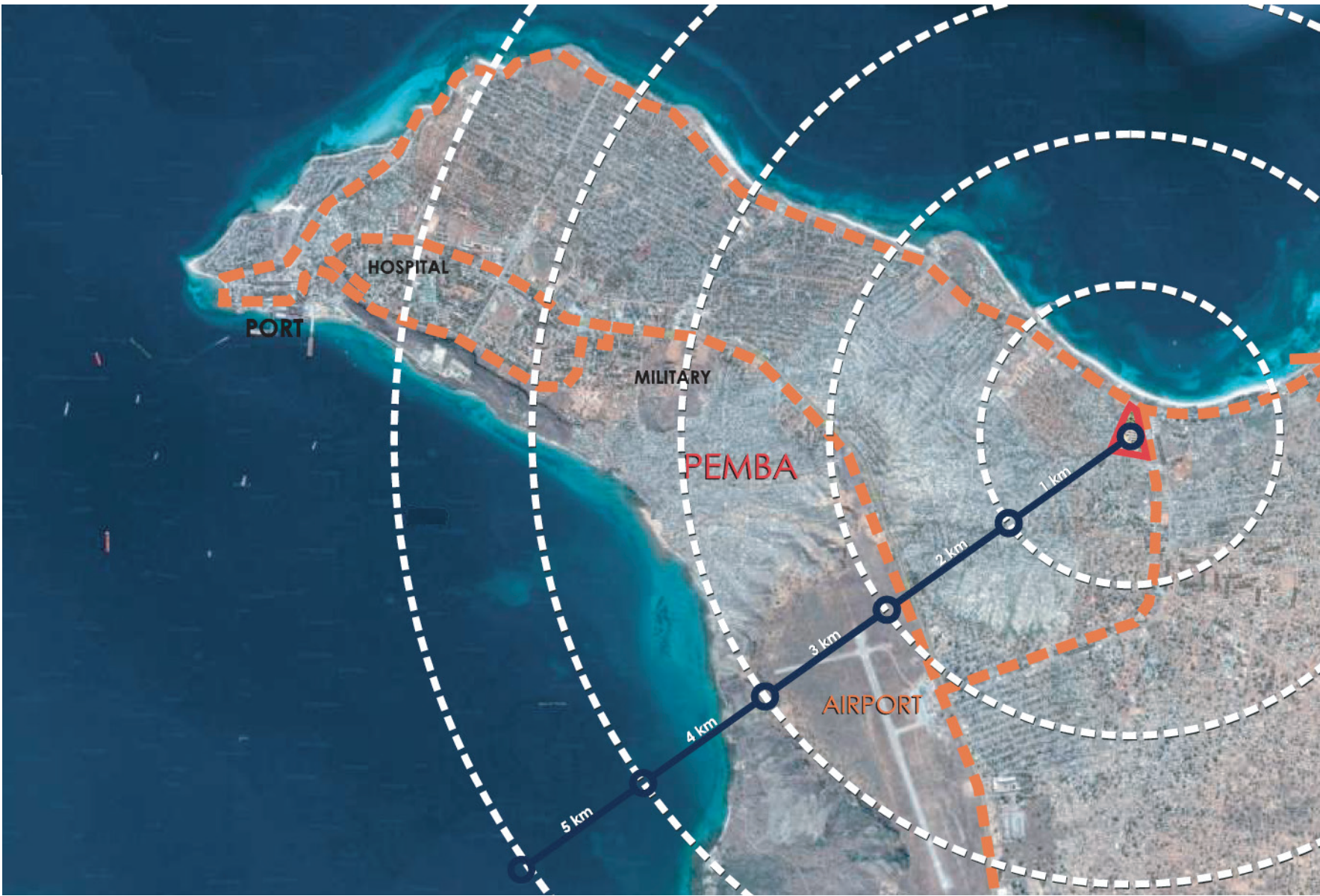
**Atterbury is renowned as a leading industrial developer evident by winning consecutive SAPOA awards for best industrial development in South Africa from 2015 to 2017 for Westcon, Hilti and Amrod at Waterfall City in Gauteng.**







LOCALITY  
& ACCESS







Developed by Atterbury and Tradehold, Pemba Shopping Centre opened its doors in June 2017.

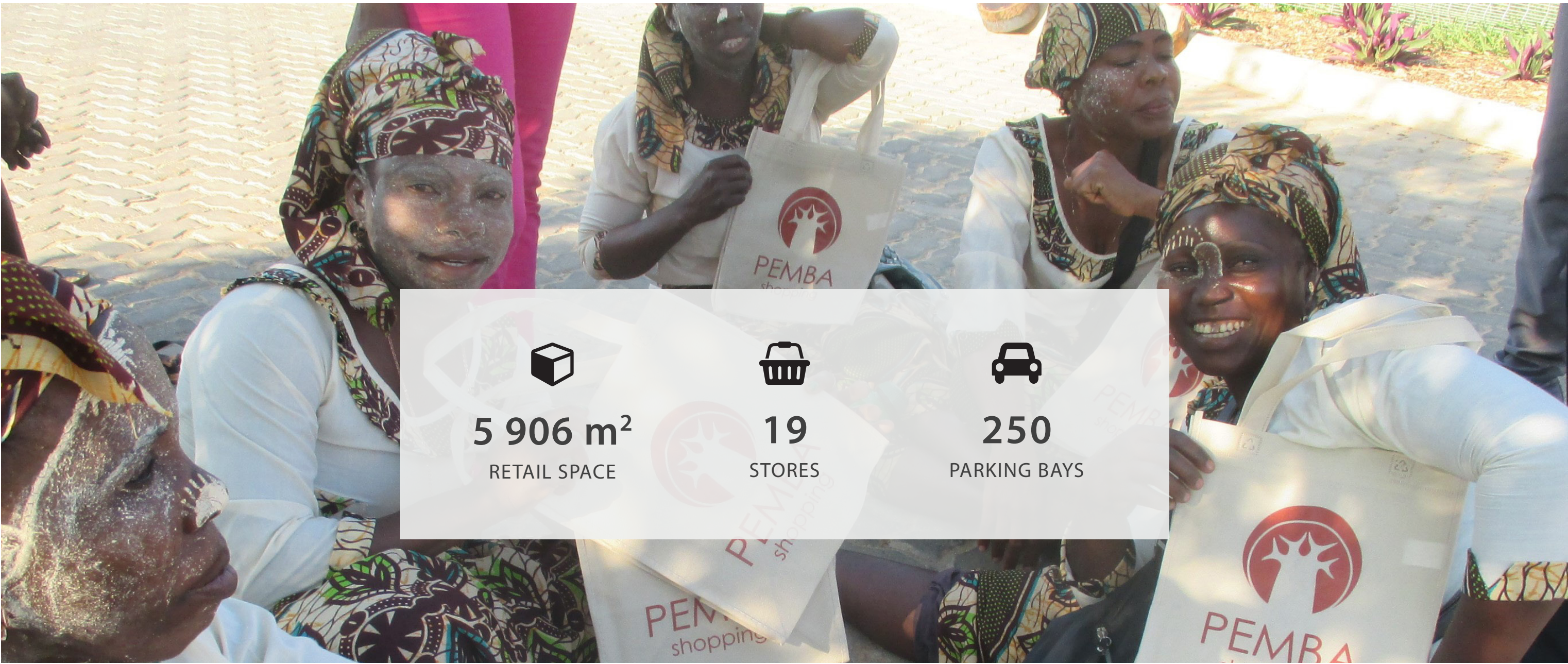
The mall is a convenient and highly accessible shopping destination to a widespread surrounding area. Pemba Shopping Centre is anchored by a 3 500 m<sup>2</sup> Shoprite supermarket, the first of its kind in the Del Cabo province, as well as OK Furniture and PEP Clothing store. There are 19 stores located in the mall with 250 parking bays.


Pemba Shopping Centre features more than 5 906 m<sup>2</sup> of trading retail space (marked purple on the plan).

The latest addition to the shopping centre is the Total filling station. Lenmed, pending licence approval, is planning to occupy an additional 993 m<sup>2</sup> (marked blue on the plan), this will take the total occupied and constructed GLA to 6 899 m<sup>2</sup>.




RETAILERS INCLUDE






**5 906 m<sup>2</sup>**  
RETAIL SPACE



**19**  
STORES



**250**  
PARKING BAYS



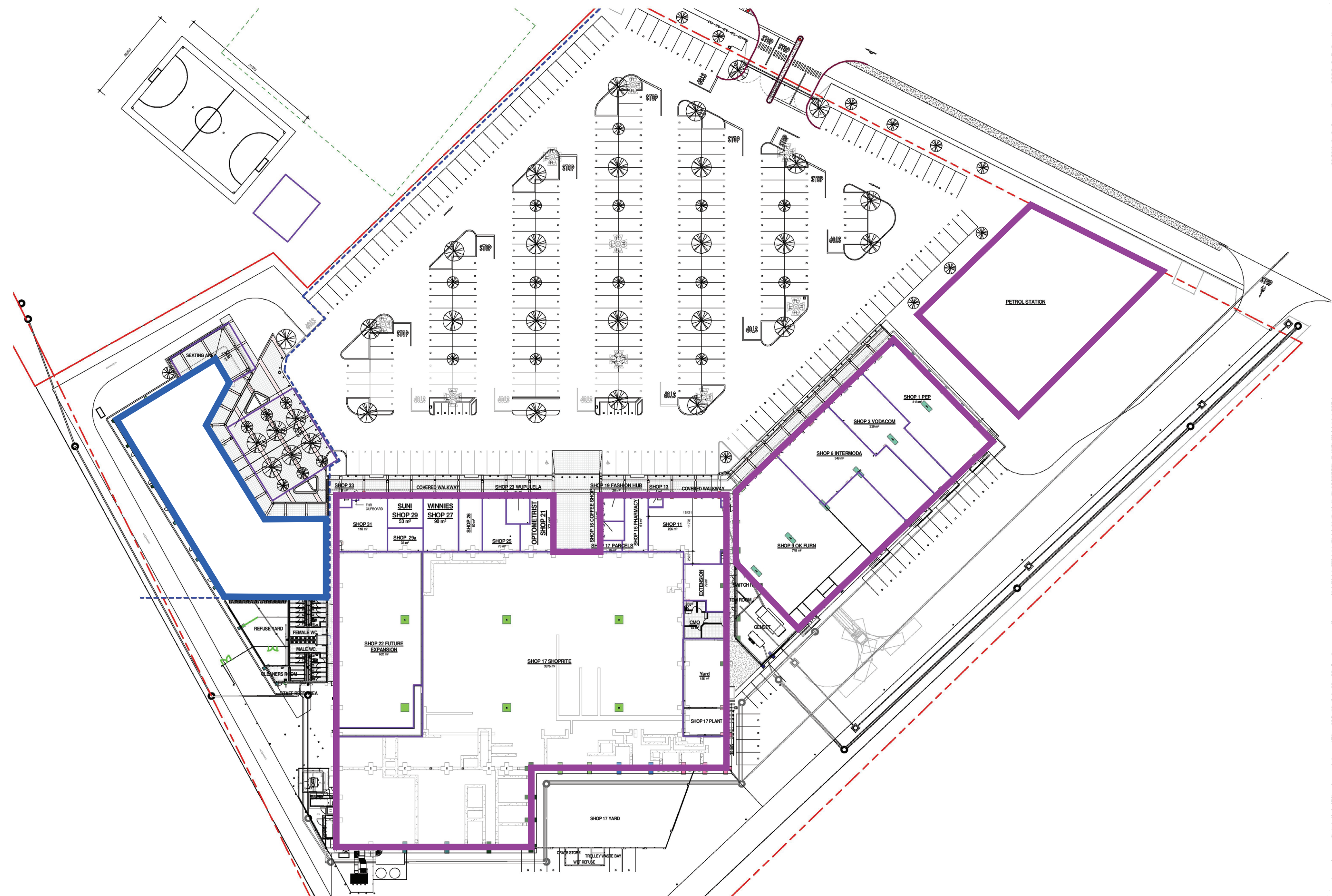


**PHOTOGRAPHIC  
LIBRARY**





## LEASING PLAN







PRETORIA OFFICE

Die Klubhuis 2nd Floor C/o 18th Street & Pinaster Ave Hazelwood, Pretoria

Tel: +27 12 471 1600

[enquiries@atterbury.co.za](mailto:enquiries@atterbury.co.za)

[atterbury.co.za](http://atterbury.co.za)