

All about customisation

Namibian Coast



Corner of Union Street & C14, Walvis Bay, Namibia

DUNESMALL.CO.NA



DUNES
MALL

WALVIS BAY NAMIBIA



ATTERBURY

It's a matter of association

- ▶ ABOUT ATTERBURY..... 1
- ▶ LOCALITY & ACCESS..... 2
- ▶ INTRODUCTION: DUNES MALL 3
- ▶ PHOTOGRAPHIC LIBRARY 4
- ▶ FLOOR PLANS
- ▶ GROUND 5





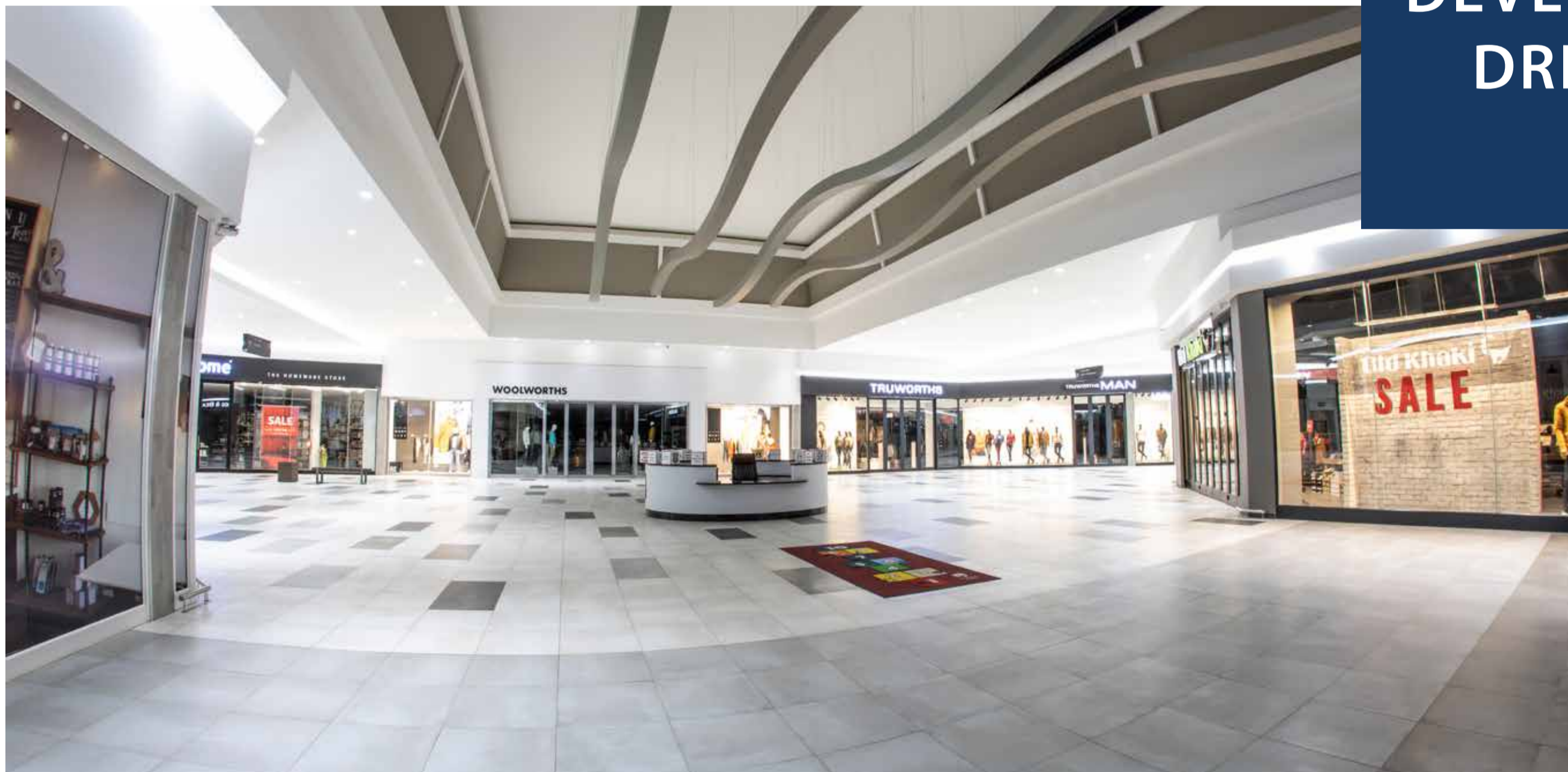
MASTER PLAN: DEVELOPING DREAMS

1994 saw the beginning of a new era for South Africa. It was the birth of our country as a new, true democracy and the whole world was waiting in anticipation to see to what levels the Rainbow Nation would rise.

1994 also marked the birth of Atterbury and the founders, Francois van Niekerk and Louis van der Watt, realised that there were no limits to their dreams of becoming an international force to be reckoned with. For over 27 years Atterbury has developed and managed prime commercial, industrial, retail and residential property across South Africa, the rest of the African continent and Europe.

Within the Atterbury Group you are sure to find expertise in development, asset management, leasing and corporate services. At Atterbury, we've always believed that development is the key to unlock economic and societal growth and improvement. Creative, well-managed spaces, featuring appealing aesthetics and elegant architecture within safe and accessible environments are hallmarks of all Atterbury developments.

Atterbury is renowned as a leading industrial developer evident by winning consecutive SAPOA awards for best industrial development in South Africa from 2015 to 2017 for Westcon, Hilti and Amrod at Waterfall City in Gauteng.





**LOCALITY
& ACCESS**





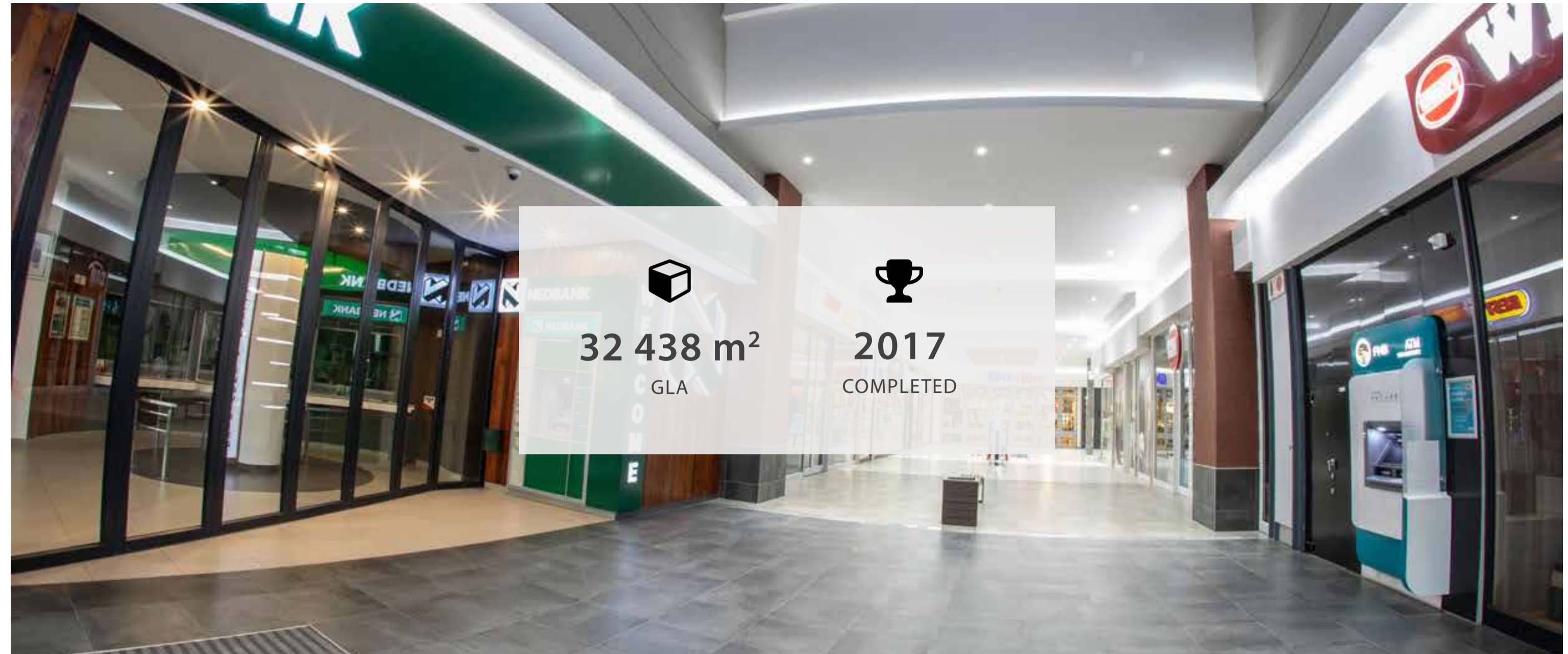
Developed by Atterbury, Dunes Mall opened its doors in October 2017.

The mall is a single-story, fully enclosed and air-conditioned building. Anchor tenants include Pick n Pay, Woolworths, Checkers and Dis-Chem. The shopping Centre's prime location on a major intersection and proximity to the Walvis Bay International Airport create an excellent retail destination.

Atterbury continuously invests in technology with the purpose of reducing future operational costs, not only for the company itself but also for its tenants and other stakeholders. A full solar and aquification installation has been done and forms part of the asset being sold.

Atterbury also offers for sale bulk of 3 425 m² to the value of R 5 140 000. There is more bulk available but no value will be attributed to this additional bulk.

A new Engen filling station is being constructed.



RETAILERS INCLUDE

Dis-Chem
PHARMACIES

W WOOLWORTHS

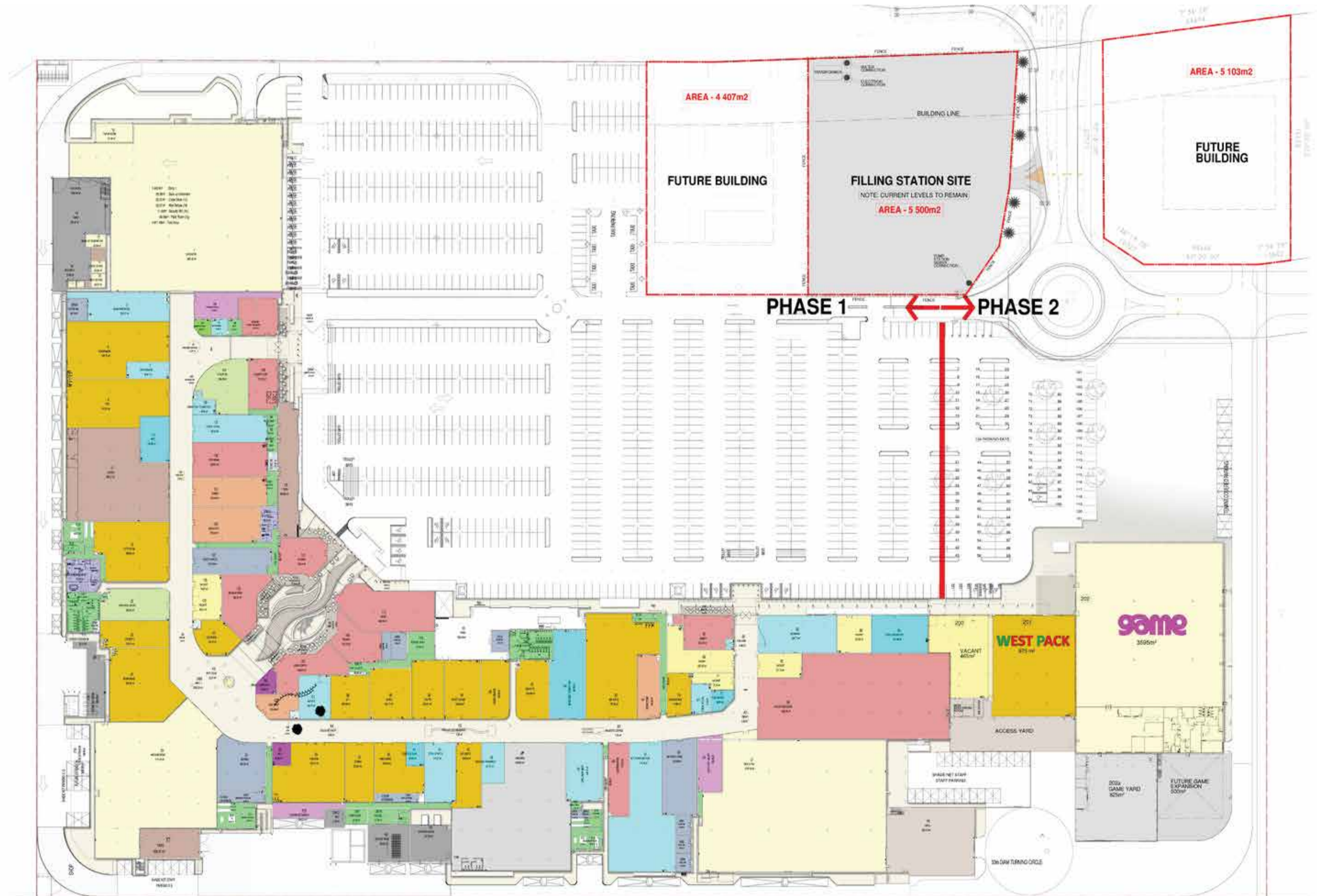
Pick n Pay







GROUND FLOOR





PRETORIA OFFICE

Die Klubhuis 2nd Floor C/o 18th Street & Pinaster Ave Hazelwood, Pretoria

Tel: +27 12 471 1600

enquiries@atterbury.co.za

atterbury.co.za